

# Overview

## Location

Situated on the Canadian border in northern New York State, St. Lawrence County offers the ideal setting for the growth and development of your business. We offer exceptional transportation facilities, low commercial power rates and the immediate availability of fully serviced industrial sites and buildings. Additionally, our proximity to major markets in the Northeastern United States and in the Montreal-Toronto corridor of Canada gives you easy access to supplies, company headquarters and customers.

### Area

2,685.60 square miles

### Weather

Mean Daily Temperature:

January 18° F

July 70° F

## Population 109,939

Potsdam 16,284

Massena 12,483

Ogdensburg 11,119

Canton 10,370

Gouverneur 7,001

(Source: U.S. Census Bureau, 2008 Population Estimates)

### Workforce

Labor Force 48,322

Households 40,172

Median Household Income \$39,815

Per Capita Income \$18,198

Median Home Sales Price \$72,900

(Source: U.S. Census Bureau, 2005-2007 American Community Survey)

### Local Utilities

**National Grid:** Provides electric service to approximately 1.5 million customers in the region of upstate New York, including St. Lawrence County. For current rates and services, visit:

[www.nationalgridus.com/niagaramohawk/business/index.asp](http://www.nationalgridus.com/niagaramohawk/business/index.asp)

**Massena Electric Department:** The MED system covers 131 square miles with more than 9,000 customers. Massena Electric provides businesses and residents with energy at rates that are the lowest 10 percent nationally. For current rates and services available, visit: [www.med.massena.ny.us](http://www.med.massena.ny.us)

**St. Lawrence Gas: An Enbridge Company:** Provides natural gas services across St. Lawrence County and a portion of Lewis County. The Company serves the cities, towns and/or villages of Beaver Falls, Canton, Croghan, Gouverneur, Heuvelton, Lisbon, Madrid, Massena, New Bremen, Norfolk, Norwood, Ogdensburg, Potsdam, Raymondville, and Waddington. For current rates and services, visit: [www.stlawrencegas.com](http://www.stlawrencegas.com)

**Market Access:** The County's border location offers advantages for companies serving markets in both the United States and Canada. Canadian companies serving the US market appreciate the ease of access to the branches and subsidiaries they have located in St. Lawrence County.

**Education:** Five colleges and universities enroll over 10,000 students, including three colleges operated by the State University System. Clarkson University is home to the State's Center for Advanced Technology in Advanced Materials Processing.

Clarkson University, Potsdam	3,045
St. Lawrence University, Canton	2,279
SUNY Canton	3,361
SUNY College at Potsdam	4,332
SUNY College of Environmental Science & Forestry, Wanakena	100

**Empire Zones:** New York State's Empire Zone (EZ) program was created to stimulate economic growth through a variety of State tax incentives designed to attract new businesses to New York State and to enable existing businesses to expand and create more jobs. For details and eligibility, visit:

[www.empire.state.ny.us/Tax\\_and\\_Financial\\_Incentives/Empire\\_Zones/default.asp](http://www.empire.state.ny.us/Tax_and_Financial_Incentives/Empire_Zones/default.asp)

### 10 Largest Employers

St. Lawrence University	SUNY Potsdam
ALCOA	Canton-Potsdam Hospital
St. Lawrence County	Clarkson University
United Helpers Organization	St Lawrence-Lewis BOCES
Claxton-Hepburn Medical Center	St. Lawrence NYSARC

# Table of Contents

## I. GENERAL INFORMATION

- 1.0 St. Lawrence County Characteristics
- 2.0 Population Characteristics
- 3.0 Housing
- 4.0 Land Use and Regulations

## II. PUBLIC & PRIVATE SERVICES

- 1.0 Utilities
- 2.0 Transportation
- 3.0 Community Services
- 4.0 Media Services

## III. EDUCATION

- 1.0 Primary & Secondary Schools
- 2.0 Boards of Cooperative Educational Services
- 3.0 Higher Education

## IV. LABOR & EMPLOYMENT

- 1.0 Labor Force
- 2.0 Income

## V. INDUSTRY

- 1.0 Agriculture
- 2.0 Lumber & Logging
- 3.0 Paper Industry
- 4.0 Minerals Extraction and Primary Metals Industry
- 5.0 Electronics Industry
- 6.0 Institutional Industry
- 7.0 Energy Supply Industry
- 8.0 Tourism
- 9.0 Retail Trade

## VI. GOVERNMENT REGULATIONS

- 1.0 Government
- 2.0 Tax Requirements
- 3.0 Government Assistance
- 4.0 Industrial Sites & Office Parks

## VII. CULTURE & RECREATION

- 1.0 St. Lawrence County Attractions
- 2.0 Cultural Resources
- 3.0 Recreational Facilities
- 4.0 Outdoor Recreation

# General Information

We begin with an overview of St. Lawrence County and its residents. The County is nestled between the St. Lawrence River, the Thousand Islands region, and the Adirondack Mountains. This section provides information about the physical land and climate, the most recent demographics of its inhabitants, and the available housing in the County.

<b>1.0 ST. LAWRENCE COUNTY CHARACTERISTICS</b>
--

## 1.1 Location and Size

St. Lawrence County is located in Northern New York along the Canadian border. The Adirondack Mountains lie to the east, the Thousand Islands region to the south, and the St. Lawrence River to the northwest. The total land area of the County is 2,685 square miles. It comprises 32 towns, 13 villages, and one city. The County Seat is in the town of Canton, which is near the geographic center of the County.

In close proximity are the Canadian cities of Ottawa, Ontario and Montreal, Quebec. Lake Placid, home to the 1932 and 1980 Winter Olympic Games, is a short drive through the picturesque Adirondack Mountains.

Interstates 81 and 87 are within easy reach, and access to ocean shipping routes is as close as the St. Lawrence Seaway. Highway 401 is just over the Canadian border; this roadway connects the metropolitan areas of Toronto, Montreal, and Windsor and continues across Canada.

## 1.2 Topography

St. Lawrence County may be divided into three physiographic regions, each with its own distinguishing features. The St. Lawrence Valley, the Adirondack Foothills, and the Adirondack Mountains were all shaped during the glacial period.

St. Lawrence County  
PHYSIOGRAPHIC REGIONS

	St. Lawrence Valley	Adirondack Foothills	Adirondack Mountains
<b>Length</b>	70 miles	50 miles	Approximately 40 miles
<b>Width</b>	22 miles	5-12 miles	Approximately 20 miles
<b>Area</b>	1,540 square miles	250-600 square miles	973 square miles
<b>Elevation</b>	158-600 ft.	600-1,000 ft.	Over 1,000 ft.
<b>Land</b>	Level to gently sloping; wetlands, shallow lakes, slow streams	Hills, ponds, fewer wetlands, rapid rivers, rapid streams	Mountains, marshes, bogs, rivers, streams, lakes, ponds
<b>Ground Water</b>	High quantity and quality	High quantity and quality	High quantity and quality
<b>Soils</b>	Heavy Poor drainage Marine clay	Lighter Good drainage Sandy deposits	Thin Rock underneath Pockets of peat Precambrian bedrock
<b>Special Notes</b>	50% of County excellent for agriculture, extensive hydro-power	4 major rivers, little flooding, extensive hydro-power	County's highest point: Mt. Matumbula 2,688 ft

**1.3 Principal Bodies of Water**

All of St. Lawrence County is within the watershed of the St. Lawrence River. Approximately 12% of the North American continent is drained by this system. There are numerous minor watersheds in the County, all of which run north to the St. Lawrence River. Approximately 93% of the County is drained by one of four major rivers: the Raquette, the Oswegatchie, the St. Regis, and the Grasse.

St. Lawrence County  
RIVERS

Principal Rivers	Drainage Area (sq. mi.)	Flow (cu.ft./sec.)	Measured at	Length* (mi.)
St. Lawrence		244,000.00	Massena	76
Oswegatchie	986	1575.29	Heuvelton	133
Raquette	721	1440.68	Piercefield	163
Grasse	598	1015.55	Chase Mills	112
St. Regis	612	1265.65	Brasher Center	77

\* Length within St. Lawrence County only. Source: U.S. Geological Survey, July 2009

St. Lawrence County  
MAJOR LAKES AND RESERVOIRS

Lake/Reservoir	Size / Acres
Black Lake	11,000
Cranberry Lake	7,000
Carry Falls Reservoir	3,200
Rainbow Falls Reservoir	739
Blake Falls Reservoir	642

## 1.4 Climate

The delightful four-season weather of the North Country is an endless source of pleasure to its residents and visitors. Cold winters are offset by the gradual transition to spring, warm, sunny summers, and breathtaking autumn days. The following information describes the year-round climate found in St. Lawrence County.

### St. Lawrence County GROWING SEASON

Freeze Free Period .....	150 Days
Last Spring Frost.....	May 1 – June 1
First Fall Frost.....	September 15 – October 1

Source: Dept of Commerce - National Climate Data Center

### St. Lawrence County TEMPERATURE

July mean	69.8° F	21°C
July maximum	81.1° F	27.3°C
January mean	14.8° F	-9.6°C
Annual mean	43.8° F	6.6°C

### St. Lawrence County PRECIPITATION

Annual mean	35.8 in.	91 cm.
Growing season	8-16 in.	20-40 cm.
Annual mean snowfall	81.7 in.	207.5 cm.

Source: National Climate Data Center, National Oceanic and Atmospheric Administration

The following table compares the weather in Massena, a St. Lawrence County village, with representative communities in North America, and is measured in degrees Fahrenheit (° F).

#### TEMPERATURE

	Massena New York	Montreal Quebec	Rochester New York	Chicago Illinois	Stockton California
<b>WINTER</b>					
Maximum	30.3	27.0	36.1	37.4	62.3
Minimum	4.8	8.0	16.6	18.3	35.3
Mean	18.0	17.5	26.2	28.8	47.4
<b>SPRING</b>					
Maximum	68.0	65.0	67.9	70.2	81.0
Minimum	19.3	21.0	25.2	32.2	42.7
Mean	42.9	41.8	45.4	50.3	60.0
<b>SUMMER</b>					
Maximum	81.1	78.0	81.4	84.4	92.3
Minimum	53.5	57.0	55.0	60.8	54.7
Mean	67.3	67.8	68.5	73.3	73.5
<b>AUTUMN</b>					
Maximum	69.1	67.0	71.1	76.2	88.4
Minimum	27.8	29.0	32.6	35.1	40.6
Mean	46.9	47.3	50.5	54.8	62.7

Precipitation includes sleet, hail, etc., but the most common forms are rain and snow. The figures in the table below represent precipitation in inches.

#### PRECIPITATION

	St. Lawrence County	Montreal Quebec	Rochester New York	Chicago Illinois	Stockton California
<b>Rain</b>	37.6	37.3	32.2	34.1	16.0
<b>Snow</b>	81.7	82.8	85.6	33.6	0
<b>Precip Days</b>	152	N/A	161	118	54

Source: National Climate Data Center, National Oceanic and Atmospheric Administration

## 2.0 POPULATION CHARACTERISTICS

The following tables and graphs will provide a demographic snapshot of St. Lawrence County's population. Like much of northern New York, St. Lawrence County has experienced a slight population decline. However, it remains very attractive as both a potential market and labor pool for area businesses.

### 2.1 Population by Age

SEX AND AGE	
Total population	109,701
Male	55,554
Female	54,147
Under 5 years	6,057
5 to 9 years	5,642
10 to 14 years	5,963
15 to 19 years	10,106
20 to 24 years	11,605
25 to 34 years	14,685
35 to 44 years	13,121
45 to 54 years	15,263
55 to 59 years	6,810
60 to 64 years	5,438
65 to 74 years	7,837
75 to 84 years	5,189
85 years and over	1,985
Median age (years)	35.7
18 years and over	87,693
21 years and over	79,037
62 years and over	17,825
65 years and over	15,011
18 years and over	87,693
Male	44,342
Female	43,351
65 years and over	15,011
Male	6,351
Female	8,660

Source: U.S. Census Bureau, Population Estimates Program (July 2008)

## 2.2 Population Trends

YEAR	St. Lawrence County		New York State	
	POPULATION	% CHANGE	POPULATION	% CHANGE
1910	89,000		9,113,600	
1920	88,100	-1.0	10,385,200	13.9
1930	91,000	3.3	12,588,100	21.2
1940	91,100	0.1	13,479,100	7.1
1950	98,900	8.6	14,830,200	10.0
1960	111,200	12.4	16,782,300	13.2
1970	112,300	1.0	18,241,400	8.7
1980	114,300	1.8	17,558,200	-0.8
1990	111,974	-2.0	17,990,778	2.5
2000	111,931	-2.5	18,489,997	2.8
2008*	109,701	-2.0	19,297,729	4.4

\* Annual Estimates of Population Change, Source: U.S. Census Bureau, Population Division

## 2.3 Population by Race / Ethnic Group

At the time of the 2005-2007 American Community Survey, St. Lawrence County's population was primarily white. Only the County's American Indian population exceeds the State average.

Race/Ethnic Group	St. Lawrence County	Percent	New York State	Percent
White	104,839	95.6	12,817,605	66.5
Black/African American	2,936	2.7	3,004,630	15.6
American Indian *	1,608	1.5	67,242	0.3
Asian	1,225	1.1	1,301,199	6.7
Other	69	0.06	2,083,694	10.9
Hispanic Origin **	2,157	2.00	3,126,718	16.2
<b>TOTAL POPULATION</b>	<b>109,701</b>		<b>19,280,753</b>	

\* Includes Alaska Natives, Eskimos and Aleutian Islanders

\*\* Hispanics are counted in the various racial categories, so their population is counted twice

Source: US Census Bureau, Population Estimates Program

## 2.4 Households

The total number of households in St. Lawrence County as of July 2008 was 41,354. The average number of persons per household was 2.32. Of the total households, 27,278 were family households. Family households include two or more persons occupying a given housing unit, including the householder, who are related by blood, marriage, or adoption. A breakdown of family households follows:

Husband-Wife Families	21,036
Male Householder – no spouse	1,766
Female Householder – no spouse	4,476

Source: U.S. Census Bureau, 2006-2008 American Community Survey

## 2.5 Population and Area

TOWN	SQUARE MILES	2008 POPULATION	POPULATION PER SQUARE MILE
Brasher	92	2,351	25.5
Canton	105	10,370	98.8
Clare	97	107	1.1
Clifton	136	774	5.7
Colton	242	1,481	6.1
DeKalb	83	2,213 (2000)	26.7
Depeyster	43	936 (2000)	21.8
Edwards	51	1,127	22.1
Fine	167	1,604	9.6
Fowler	60	2,211	36.9
Gouverneur	72	7,001	97.2
Hammond	62	1,194	19.3
Hermon	53	1,055	19.9
Hopkinton	185	996	5.4
Lawrence	48	1,590	33.1
Lisbon	108	4,101	38.0
Louisville	48	3,230	67.3
Macomb	61	822	13.5
Madrid	53	1,802	34.0
Massena	47	12,483	265.6
Morristown	46	1,969	42.8
Norfolk	55	4,585	83.4
Oswegatchie	66	4,191	63.5
Parishville	98	2,068	21.1
Piercefield	104	288	2.8
Pierrepont	60	2,617	43.6
Pitcairn	60	770	12.8
Potsdam	102	16,284	159.6
Rossie	38	810	21.3
Russell	97	1,776	18.3
Stockholm	94	3,641	38.7
Waddington	52	2,212	42.5
City of Ogdensburg	5	11,119	2223.8
St. Lawrence County	2,690	109,701	40.8
New York State	47,224	19,490,297	412.7

Source: U.S. Census Bureau, 2008 Population Estimates, Census 2000

## 3.0 HOUSING

Throughout St. Lawrence County there are a variety of housing options available to either permanent or temporary residents. There are 50,617 housing units within the County, which include year-round units and vacant, seasonal and migratory units. Of those, 41,354 were occupied as of 2008, with single-family homes (35,587) making up the largest number.

### 3.1 Existing Housing

<u>Occupied:</u>	40,354
Owner Occupied	29,230
Renter Occupied	12,124
 <u>Vacant:</u>	 9,263

Source: U.S. Census Bureau, 2005-2008 American Community Survey

### 3.2 Home Ownership Housing Costs

Profile of an average sold residential (single family) property:

Housing units with a mortgage	16,603
Mortgage & selected owner costs (median)	\$1,023
Monthly costs less than 20% household income	7,817
# of Bedrooms	3
# of Bathrooms	1
Housing Units without a mortgage	12,627

Source: U.S. Census Bureau, 2005-2008 American Community Survey

For estimates of real property taxes, see Section VI-2

### 3.3 Owner-Occupied Housing

Median Value	\$76,000
--------------	----------

Source: U.S. Census Bureau, 2005-2008 American Community Survey

### 3.4 Renter-Occupied Housing

Median Rent	\$563
-------------	-------

Source: U.S. Census Bureau, 2005-2008 American Community Survey

### 3.5 Business Property (2009)

TYPE	SIZE (median)	PRICE (median)
Commercial	5,714 square feet	\$249,127
Commercial + Multi	4,074 square feet	\$252,938
Commercial + Residential	2,532	\$133,213
Commercial Land	30.33 acres	\$182,670

Total commercial listings: 151

Profile of business properties sold (2009):

Commercial: 17 listings - \$75,000 – 2,480 sq ft  
Commercial+Multi: 46 listings - \$51,500 – 2,317 sq ft  
Commercial+Residential: 607 listings - \$73,000

Source: St. Lawrence County Board of Realtors

### 3.6 Cost of Land (2009)

TYPE	SIZE (median)	PRICE (median)
Land	19.7 acres	\$54,940
Land + Commercial	16 acres	\$260,227
Land + Waterfront	25 acres	\$150,044
Land + Farm	86.8 acres	\$92,000
Land + Seasonal	103 acres	\$82,771

Total land listings: 312

Profile of average cost of land (2001):

List Price                               \$38,319  
Selling Price                             \$28,735  
Number of Listings Sold:             75

Source: St. Lawrence County Board of Realtors

### Temporary Housing (as of May 2010)

In St. Lawrence County there are 21 hotels and motels, 26 Bed & Breakfasts, 36 Cabins/Cottages and 10 vacation rentals for a total of 852 rooms with a total capacity of 2,130 persons are available through these 93 separate business establishments.

(Source: The Economic Impact of Tourism in New York State Report)

## 4.0 LAND USE AND REGULATIONS

The power to regulate the use of land in New York State is generally granted to local units of government. In St. Lawrence County 40 of the 47 municipalities have exercised those powers by adopting some type of land use management practices. These land use practices have concentrated on establishing use regulations and minimum development standards regarding density, building setback, off-street parking, signs and other aspects of construction. Enforcement of established regulations varies from community to community.

The most common form of land use control in the county is subdivision regulations which are enforced by 26 municipalities. Subdivision regulations include the review and division of land into parcels so that minimum development standards are met including:

roads	drainage
lot layout	orderly growth and development

Zoning regulations have been established to assist in separating incompatible uses, protecting natural resources, protecting home and business investments, and preventing overcrowding. Dividing land into separate land use districts and developing community plans are done in accordance with these established zoning regulations.

State agencies do exert some land use controls over lands in a number of municipalities. In the southeastern portion of the county the Adirondack Park Agency develops and implements a park-wide land use plan. The enforcement of this land use plan protects the natural beauty and resources of the park.

The New York State Agricultural Districts Program has been active in St. Lawrence County since 1978. This government program was designed to benefit farmers throughout New York State by protecting farmland from potentially conflicting state projects, land zoning that is restrictive against farming, and harmful tax assessments. There are seven Agricultural Districts in St. Lawrence County. The St. Lawrence County Board of Legislators approved each of these districts.

The St. Lawrence County Planning Board brings a county perspective to land use planning issues. The Planning Board has published a comprehensive land use plan with updates provided periodically. The County Planning Board reviews local projects which are located where they might affect county or state facilities or adjacent municipalities. The board uses a fast-track approach to projects without such impacts. Nearly 90% of all projects are sent back quickly "for local action." Ultimate authority over most land use decisions rests with the local governmental units, with the exception of those towns within the Adirondack Park.

# Public and Private Services

## ST. LAWRENCE COUNTY UTILITIES

### Electricity

St. Lawrence County is served by two electric power companies: National Grid and the Massena Electric Department. The Massena Electric Department is the only municipally-owned utility in the County, and provides service to Massena and portions of Louisville, Brasher, Norfolk, and Stockholm. National Grid serves the balance of St. Lawrence County.

The New York Power Authority is the nation's largest non-Federal public power company and the primary supplier of electricity in the State of New York. Power is sold to public and private utilities such as the Massena Electric Department. Special economic power is offered to companies that are expanding or planning a new facility, planning to increase their electric load by 400kW or more, and creating permanent jobs.

There are four classes of rates for St. Lawrence County: residential, small general, large general, and industrial service.

### Local Electric Rates

As of September 2009	Massena Electric	National Grid
<b>Residential Service</b>		
Customer Charge	\$5.00	\$16.21
Energy Charge (\$/kWh)	\$0.03678	\$0.04846
Purchase Power Adjustment Charge	fluctuates	fluctuates
<b>Commercial w/o Demand</b>	<b>(under 7kw)</b>	<b>(under 100kW)</b>
Customer Charge	\$5.00	\$21.02 *
Energy Charge (\$/kWh)	\$0.04309	\$0.06169 *
Purchased Power Adjustment Charge	fluctuates	fluctuates
<b>Commercial with Demand</b>	<b>(7kW – 25kW)</b>	<b>(under 100kW)</b>
Minimum Monthly Customer Charge	\$35.00	\$52.52 **
Demand charge, per kW	\$5.00	\$10.10 **
Energy charge, per kWh	\$0.02551	\$0.1748 **
Purchased Power Adjustment Charge	fluctuates	fluctuates
<b>Industrial Service</b>	<b>(more than 25kW)</b>	<b>(more than 100kW)</b>
Minimum Monthly Customer Charge	\$162.50	\$260.15
Demand Charge, per kW	\$6.50	\$666.66 (first 40 kW)
Reactive Demand, per kVar	\$0.45	\$0.85
Energy Charge, per kWh	\$0.01615	\$0.01135
Purchased Power Adjustment Charge	fluctuates	fluctuates

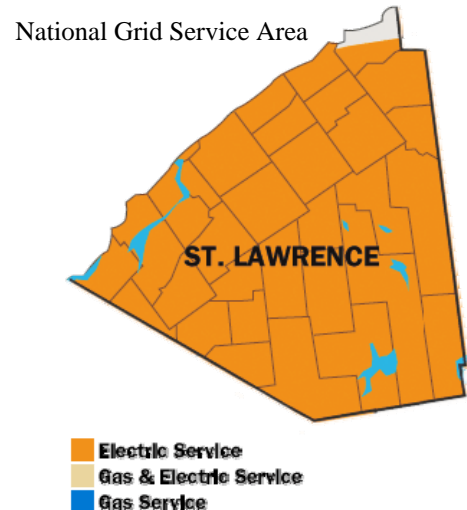
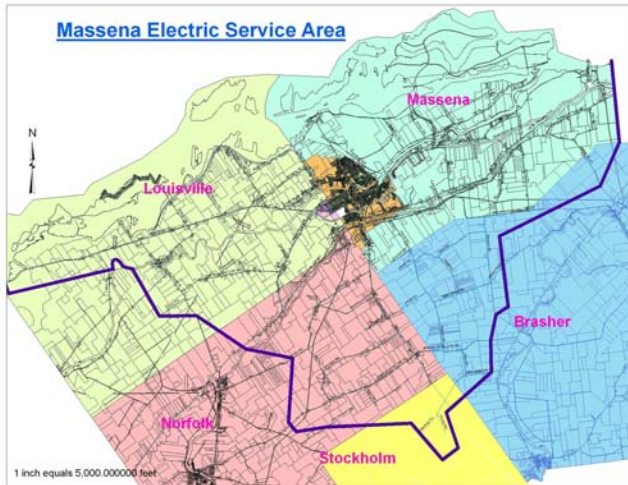
Sources: Massena Electric Dept; National Grid – as of 9/2009

\*Customers using up to 2,000 kWh

\*\* Customers using more than 2,000 kWh for four consecutive months would be classified as demand customers.

Demand Meter charges vary depending upon the amount of energy consumed. Specific questions regarding demand meter service should be directed to the appropriate power company listed below. For more information:

<p>Massena Electric Department 71 East Hatfield Street Massena NY 13662 (315) 764-0253 <a href="http://www.med.massena.ny.us">http://www.med.massena.ny.us</a></p>	<p>National Grid 300 Erie Boulevard West Syracuse NY 13202-4250 (800) 642-4272 <a href="https://www.nationalgridus.com/niagaramohawk/index.asp">https://www.nationalgridus.com/niagaramohawk/index.asp</a></p>	<p>New York Power Authority PO Box 700 Massena NY 13662 (315) 764-0226 <a href="http://www.stl.nypa.gov">http://www.stl.nypa.gov</a></p>
--	--	--



To visit the MED map online: <http://www.med.massena.ny.us/docs/service territory.htm>  
Visit the NG map online: [https://www.nationalgridus.com/niagaramohawk/about\\_us/service terr\\_map\\_a.asp?county=St%20Lawrence](https://www.nationalgridus.com/niagaramohawk/about_us/service terr_map_a.asp?county=St%20Lawrence)

## Natural Gas

St. Lawrence Gas, an Enbridge Company, serves the County's cities, towns and/or villages of Canton, Gouverneur, Heuvelton, Lisbon, Madrid, Massena, Norfolk, Norwood, Ogdensburg, Potsdam, Raymondville, and Waddington. In addition, the St. Lawrence Gas Company has co-generator projects in Gouverneur and New Brennan.

The price customers pay for natural gas, which can change from month to month, includes a number of different elements, such as:

- the cost to install your gas service
- the maintenance of your gas lines and meters
- meter reading and billing costs
- the cost to transport gas from its source at the well-head
- the cost to deliver gas through a network of gas lines
- the cost of the natural gas commodity
- the cost to balance the Company's daily supply with the daily demand
- a return on the Company's investment in capital assets to distribute gas

The unit of measure for the cost is a therm. One therm is equivalent to 100,000 British Thermal Units (BTUs). One BTU is the amount of heat energy needed to raise the temperature of one pound of water by one degree Fahrenheit.

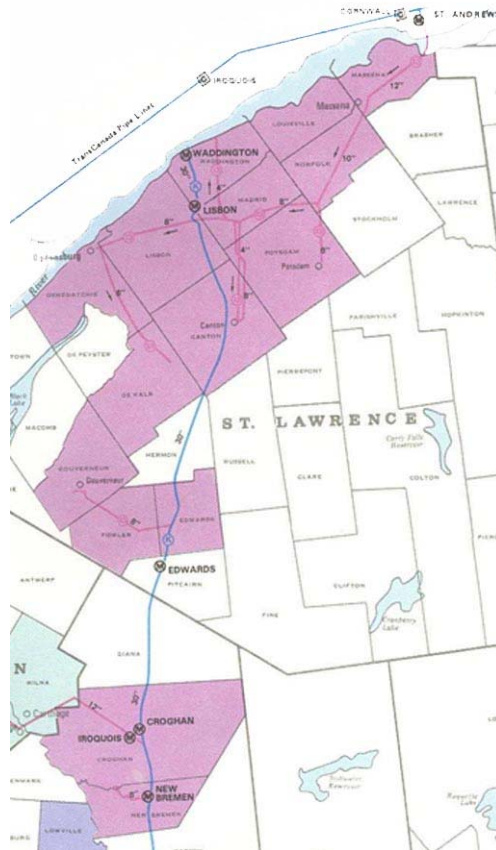
The current average price of gas as of September 2009 is:

Residential: \$.85 per therm  
Commercial: \$.73 per therm

*For more information:*

St. Lawrence Gas Company  
PO Box 270  
Massena NY 13662  
(315) 769-3516  
<http://www.stlawrencegas.com/default.htm>

St. Lawrence Gas Service Area



View this map online: <http://www.stlawrencegas.com/about.shtml?page=territory>

## Liquid Propane Gas

Liquid propane gas is available in both bottled and bulk forms. Prices fluctuate on a daily basis and are charged according to industrial, commercial, or residential, rate structures. The ten propane gas distributors in the County and their telephone numbers are listed below:

Amerigas Propane.....	(315) 389-5005
Agway Energy Products .....	(800) 540-6642
Diamond Propane, Inc.....	(315) 265-1957
Griffith Energy.....	(315) 265-3560
Marsaws Fuel .....	(315) 324-5320
JC Merriman, Inc. ....	(315) 353-6626
Morristown Fuel & Supply Co., Inc. ....	(315) 375-6327
National Propane.....	(315) 386-3914
Petro-Star .....	(315) 848-3625
Suburban Energy Services.....	(888) 249-2924

## Telephone Service

A variety of telephone service plans are available for residents and businesses within St. Lawrence County. The major carrier for the County is Verizon, but there are three local carriers as well:

Citizens Telephone Company.....	(315) 324-5911
Service Area: Hammond and Maccomb	
Size: Approximately 1,700 customers	
TDS Telecom.....	(315) 562-9911
Service Area: Edwards, DeGrasse, DeKalb Junction, Hermon	
Size: Approximately 2,400 customers	
Nicholville Telephone Company .....	(315) 328-4411
Service Area: Nicholville, Fort Jackson, Hopkinton, North Lawrence, Brasher Falls, Lawrenceville, Winthrop	
Size: Approximately 2,500 customers	
Verizon .....	Residential Service: 800-837-4966 Business Service: 888-649-9500
Service Area: Balance of St. Lawrence County and New York State	
Slic Network Solutions.....	(315) 261-7518
Service Area: Western Franklin County, Most parts of St. Lawrence County	
Size: Approximately 1,500+ customers	

## Internet Service Providers

In addition to satellite and wireless broadband Internet access, St. Lawrence County has the following primary Internet service providers (based on market share):

	Slic.com *	Westelcom	Time Warner Cable	Verizon	TDS Telecom
Phone Number	(866) 261-7518	(315) 755-2255	(315) 634-6000	(866) 761-3460	(866) 571-6662
Speed	Up to 100 Mbps	Up to 56 Kbps	Up to 10 Mbps	Up to 1 Mbps	Yes
Set-up / Activation fee **	None	None Disclosed	None	\$19.99	None
Fixed monthly charges **	\$29.95/mo for 2 Mbps unlimited access.	\$16.95/mo or \$179.40/year for unlimited access	\$39.95/mo for unlimited access	\$29.99/mo for online orders, \$34.99/mo for phone orders	\$39.95/mo for 1.5mB  \$21.95/mo for dial up

\* Updated April 2011

\*\* Rates as of May 2010

Click here to view [an updated map made in March 2009](#) that shows reported areas of broadband Internet availability in the County by technology type, including cable-access, DSL access; satellite access and wireless access.

## Water Facilities

Good quality water resources are abundant in St. Lawrence County. Surface water supplies are readily available due to the number of springs, lakes, and rivers throughout the area. These surface water supplies are utilized by the largest of the County's industries, as well as the majority of municipalities.

Ground water supplies are sufficient for domestic use almost everywhere in the County. Those not served by a central water system utilize individual wells. In most areas of the County, ground water supplies are also sufficient to accommodate the needs of municipal systems, private systems, and industry.

## Wastewater Facilities

St. Lawrence County has 23 municipal wastewater treatment facilities. Many of the rural communities not served by a municipal wastewater treatment system rely on individual septic tank or leach field systems. The municipalities with treatment facilities are:

Brasher	Gouverneur	Madrid	Potsdam Town
Canton	Hammond	Massena	Potsdam Village
Colton	Hermon	Morristown	Raymondville
DeKalb	Heuvelton	Norfolk	Rensselaer Falls
Edwards	Lawrence	Norwood	Unionville
Fine	Lisbon	Ogdensburg	

## Municipal Water and Sewer Information

Each municipality is responsible for its own water facilities and each has its own schedule of fees. Operation and hook-up charges vary with location and the amount of existing facilities (i.e. whether a tap has to be installed or activated). The city, town or village should be contacted for complete information.

## **2.0 ST. LAWRENCE COUNTY TRANSPORTATION**

St. Lawrence County's transportation systems provide efficient and flexible movement of both passengers and materials throughout the County and to other regions. The County has established facilities for ground transportation, trucking, shipping, docking, air travel, and airfreight.

### **2.1 Ground Transportation**

St. Lawrence County is within a short driving distance of a number of markets and urban centers. The driving times given in the following table are approximate for a starting point in Canton, which is roughly at the center of the County:

Driving / Truck Distances to Markets:  
United States

<b>DESTINATION</b>	<b>DRIVING HOURS</b>
Albany, New York	4.0
Binghamton, New York	3.5
Boston, Massachusetts	7.0
Buffalo, New York	5.0
Burlington, Vermont	3.0
Chicago, Illinois	15.0
Cleveland, Ohio	7.0
Detroit, Michigan	8.5
New York, New York	6.5
Philadelphia, Pennsylvania	7.5
Plattsburgh, New York	2.0
Rochester, New York	3.5
Syracuse, New York	2.5
Utica, New York	2.5
Washington, DC	9.0
Watertown, New York	1.5

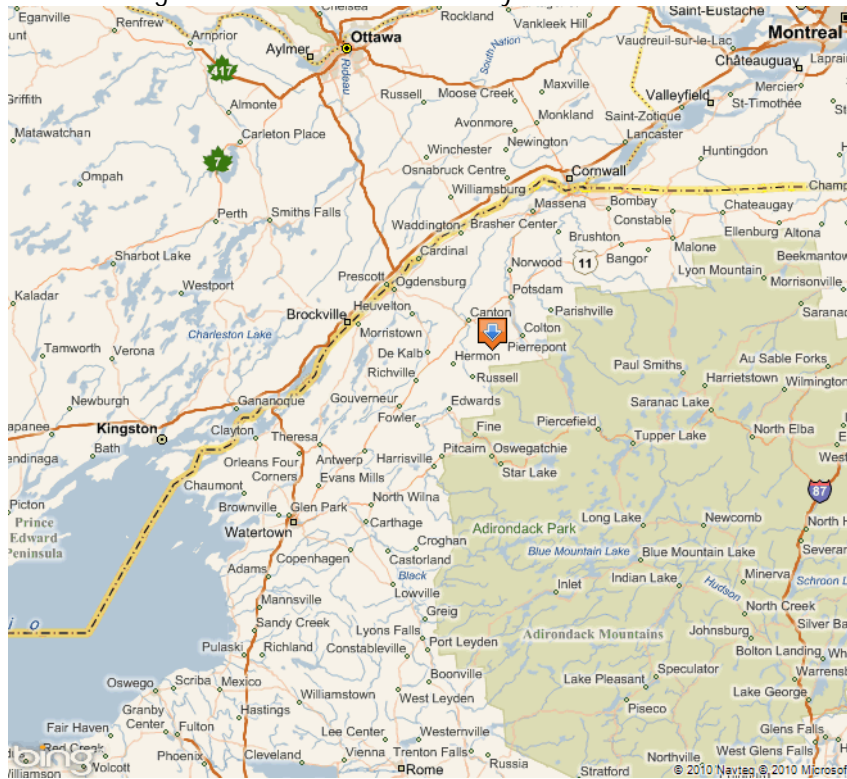
## Canada

DESTINATION	DRIVING HOURS
Cornwall	.5
Montreal	2.0
Ottawa	1.5
Toronto	5.0

Nearby highways include the following:

Interstates: 81, 87  
 US Routes: 11\*  
 State Highways: 3\*, 12\*, 37\*, 56\*, 68\*, 812\*  
 Canadian Highways: 401, 416

\* Runs through or into St. Lawrence County



Click here to view map online: <http://www.bing.com/maps/?v=2&cp=44.37908773447735--75.32941035926342&lvl=8&sty=r&where1=S1%20Lawrence>

## 2.2 Trucking Services

There are 16 established trucking operations in St. Lawrence County. The cost of transport varies according to a number of factors, such as size of load, destination, one-way vs. two-way service, number of workers needed, and time frame.

### 2.3 Railroads

CSXT and Vermont Rail Systems provide commercial non-passenger rail service in St. Lawrence County. Both rail systems provide fast access to national rail networks throughout the United States and Canada.

CSXT operates the largest freight railroad system in the Northeast-Midwest portion of the United States. Operating in fifteen states and Canada, CSXT serves a heavy industrial and consumer region that includes six of the ten largest population centers in the County. Canadian traffic traversing St. Lawrence County accounts for over half of CSXT's local daily rail activity. In addition, CSXT services the County's population centers in Massena, Gouverneur, Canton, Potsdam, and Norwood. Ogdensburg may be reached indirectly by interchange with the Vermont Rail System. Typically, CSXT handles metals, forest products, chemicals, grain, fuel, automobiles, as well as other local commodities. (For more information, visit <http://www.csx.com>)

The Vermont Rail System has approximately 22 miles of shortline track that runs from Norfolk to Norwood and from Norwood to Ogdensburg. There are four stations along this route: Ogdensburg Port, Hoosier Magnetic (Norfolk), Norfolk Paper Company, and the engine house in Norfolk. The railroad interchanges with the CSXT system at the Norwood train yard. (For more information, visit: <http://www.vermontrailway.com/railroads/nyog.html>)

The St. Lawrence County IDA owns a shortline rail, connecting the southern part of St. Lawrence County to the CSXT main line at Carthage, New York. (For service information, contact the St. Lawrence County IDA.)

Passenger rail service is presently not available in St. Lawrence County. However, passenger service is available on the Canadian side of the St. Lawrence River, connecting with the Amtrak system in Montreal. Amtrak also serves Syracuse, Utica, Albany, Plattsburgh, Rouses Point, and the eastern verge of the Adirondack Mountains.

*For more information contact:*

CSXT (315) 764-3300	Vermont Rail System 1-800-639-3088	Amtrak (800) 872-7245
------------------------	---------------------------------------	--------------------------

## 2.4 Airports

St. Lawrence County is served locally by a number of airports, including Richards Field (Massena), Ogdensburg International Airport, and Damon Field (Potsdam). Airports within a short drive include Watertown International Airport, Hancock International Airport (Syracuse), and the international airports of Ottawa and Montreal.

### St. Lawrence County AIRPORTS

	<b>RICHARDS FIELD</b>	<b>OGDENSBURG INTERNATIONAL AIRPORT</b>	<b>DAMON FIELD</b>
<b>Operated by</b>	Town of Massena	Ogdensburg Bridge and Port Authority	Village of Potsdam
<b>Length of Runways</b>	2: 5,000 ft & 4,000 ft.	5,200 ft.	3,700 ft.
<b>Services</b>	Passenger Freight	Passenger Freight	Carrier Freight
<b>Airline Carriers</b>	Cape Air	Cape Air	Charter
<b>Connects to</b>	Albany, NY	Albany, NY	N/A
<b>Contact</b>	(315) 769-7605	(315) 393-0045	(315) 265-5640

### AIRPORTS OUTSIDE OF ST. LAWRENCE COUNTY

	<b>WATERTOWN INT'L AIRPORT DEXTER, NY</b>	<b>HANCOCK INT'L AIRPORT SYRACUSE, NY</b>
<b>Operated by</b>	City of Watertown	City of Syracuse
<b>Length of Runways</b>	2: 5,000 ft. each	2: 9,003 ft. & 7,500 ft.
<b>Services</b>	Passenger Freight	Passenger Freight
<b>Airline Carriers</b>	Cape Air	7 major air carriers; 9 other airlines
<b>Driving Distance from County</b>	Approx. 1 hour	Approx. 2 hours
<b>Contact</b>	(315) 639-3809	(315) 454-4330

### CANADIAN AIRPORTS

	<b>Ottawa Macdonald-Cartier International Airport (Ontario)</b>	<b>Montréal-Pierre Elliott Trudeau International Airport (Quebec)</b>	<b>Montréal-Mirabel International Airport (Quebec)</b>
<b>Contact</b>	(613) 248-2125	(800) 465-1213	(800) 465-1213
<b>Driving Distance from Ogdensburg-Prescott Int'l Bridge</b>	1.0 hours	1.0 hours	1.5 hours
<b>Services</b>	Commercial Passenger Freight / Cargo	Commercial Passenger	Specialized Freight / Cargo Services

## 2.5 Port Facilities

The Port of Ogdensburg is owned and operated by the Ogdensburg Bridge & Port Authority. It offers full intermodal transportation options to industrial shippers. The Port is the only port on the Great Lakes designated as a Port of National Defense.

The Port is located on the St. Lawrence River at Latitude 44 42'N and Longitude 75 30' W. This places it only 60 miles east of Lake Ontario and 90 miles west of Montreal.

The deep-draft berthing (27') can provide large sea vessels with access to the Great Lakes and world ports. Stevedoring services, warehousing, and upland storage are available for all types of bulk and general cargo, as well as raw materials. Regularly handled cargo includes potash, road salt, crude, talc, wood pulp, zinc concentrate, sand, and baler twine. The Port of Ogdensburg is closer to Northern Europe than other U.S. Ports, thus making it highly economical for ships to deliver cargo to Ogdensburg. This strategic location on the St. Lawrence Seaway provides the markets of the major northeastern cities (New York City, Boston and Philadelphia) with convenient access to ships traveling from Northern Europe.

### *Warehouse and Bulk Storage*

The Port of Ogdensburg boasts clean, modern and efficient general cargo facilities with over 125,000 square feet of warehousing. A newly constructed 30,000 square foot bulk storage warehouse offers the flexibility needed to expedite the discharging or loading of agricultural and industrial commodities. All warehouses are fully bonded, and heated and insulated facilities are available.

### *Intermodal Loading*

The Port of Ogdensburg operates bulk-loading conveyors designed to load 100-pound material at the rate of 1,100 short tons per hour. The Port has the ability to provide shore side cranes, which range from 50 tons to 220 tons. Roll-on/roll-off service is available.

### *Harbor and Dock Statistics*

The harbor and slip depths at the Port of Ogdensburg are 27 feet (8.2 m), which is standard Seaway depth. The marine terminal has a newly extended 1,250-foot (381 m) wharf. The dock height is 10 feet above water level and is designed for live loading surcharge of 1,000 pounds per square foot. Low water datum elevation is 242.2 feet above sea level.

*For additional information on the Port of Ogdensburg contact:*

Ogdensburg Bridge and Port Authority  
One Bridge Plaza  
Ogdensburg NY 13669  
(315) 393-4080  
[www.ogdensport.com](http://www.ogdensport.com)

## 2.6 Mass Transit and Regional Bus Service

Regional bus service is provided by Adirondack Trailways. Service is provided to Massena, Potsdam, Canton, DeKalb Junction and Gouverneur within the County, and with destinations

throughout New York State as well as Toronto, Montreal and connections to Ottawa, Washington DC and Boston.

*For more information contact: Adirondack Trailways, (800) 776-7548*

Roethel Coach Lines currently provides service within the County for the "Connecting Communities" public transportation system. Fares (as of 2010) were \$2.00 with no charge for children under the age of 3 and free transfers.

For a current list of communities served, routes and schedules, visit:

<http://www.commuterbusinfo.com/index.html>

## **3.0 COMMUNITY SERVICES**

### **3.1 911 and Direct Alarm Tie-In**

St. Lawrence County has a centralized fire-rescue dispatch control center located in Canton that is operated by trained dispatchers around the clock. The center staff has the capacity to dispatch any fire, emergency, or medical unit within the County to an emergency scene and maintains contact with all police units. In addition to Emergency 911 service, any St. Lawrence County business, industry, or resident may arrange for a direct tie-in alarm system. Participating firms install their own equipment and lease the telephone line that provides 24-hour automatic monitoring.

### **3.2 Fire Protection**

St. Lawrence County fire protection is provided by 41 separate fire departments. Ogdensburg has the only paid fire department with 37 fire fighters; the remaining departments are volunteer units averaging 45 volunteers each. There are a total of 2,200 volunteer fire fighters throughout the County.

*For additional information about these services contact the St. Lawrence County Fire/Rescue Coordinator at (315) 379-2240.*

### **3.3 Emergency Services**

St. Lawrence County operates a mutual aid plan that allows any fire department to easily obtain the assistance of 200 fire fighters and rescue units and 10 additional vehicles during an emergency situation.

State-certified rescue squads that are staffed by Emergency Medical Technicians and have Advanced Life Support capability also cover all fire departments within the County. Emergency helicopter evacuation is readily available from Fort Drum, Saranac Lake, and Alexandria Bay.

The County also has a specially trained underwater recovery team which is comprised of approximately 100 members, of which over 50 are trained scuba divers in the 21 fire and rescue units throughout the County. The units involved with the dive team are the Potsdam, Madrid, Massena, Gouverneur, and Ogdensburg Rescue Squads, and the Norwood, Norfolk, Fine, Star

Lake, Lisbon, West Stockholm, Morristown, Brier Hill, Louisville, Hogansburg, Waddington, Canton, Hannawa Falls, Parishville, and West Potsdam Fire Departments. In addition, the Tupper Lake Rescue unit is an affiliate member. *For more information on the dive team call (315) 265-3392.*

### 3.4 Police and Law Enforcement

St. Lawrence County receives police protection from the New York State Police (Troop B), County Sheriff, and local police – together providing a complement of more than 500 officers to our area.

#### *Law Enforcement Personnel\**

Local police departments are located in the City of Ogdensburg, Town of Norfolk, and the Villages of Canton, Gouverneur, Massena, Norwood, and Potsdam. The New York State Police in St. Lawrence County operate out of five substations: Canton, Gouverneur, Massena, Ogdensburg, and Star Lake. The St. Lawrence County Sheriff's Department is headquartered in the Village of Canton and provides patrol service throughout the County.

POLICE DEPARTMENT	OFFICER COMPLEMENT
Canton	8
Gouverneur	8
Massena	21
Norfolk	8
Norwood	10
Ogdensburg	25
Potsdam	15
St. Lawrence County Sheriff	34
SUNY Canton	12
SUNY Potsdam	12
TOTAL	153

\* Does not include U.S. Border or NYS Police officers stationed in the County.  
Source: New York State Division of Criminal Justice Services (2009)

#### *Crime Rates*

As may be expected from the generally rural nature of the County, serious crime is much rarer in St. Lawrence County than the balance of the State. However, local agencies are fully capable of dealing with all levels of crime, as well as crime prevention. The following tables indicate reports and arrests for various crimes in the County and the State for 2008.

#### CRIMES REPORTED/KNOWN TO POLICE

TYPE OF CRIME	ST. LAWRENCE COUNTY		NEW YORK STATE	
	County	Rate	Count	Rate
Murder	0	0	835	4.3
Rape	23	21.0	2,775	14.3
Robbery	5	4.6	31,748	163.1

Aggravated Assault	175	159.5	42,013	215.8
Burglary	403	367.4	65,198	334.9
Larceny	1447	1,319.0	295,676	1,518.8
Motor Vehicle Theft	48	43.8	25,062	128.7

Source: New York State Division of Criminal Justice Services (2008)

### 2008 County Index Crime Counts & Rates Per 100,000 Population

TYPE OF CRIME	ST. LAWRENCE COUNTY		NEW YORK STATE	
Index Crime	2,101	1,911.8	463,307	2,373.6
Violent Crime	203	185.3	77,371	396.8
Property Crime	1,898	1,726.5	385,936	1,976.9

Source: New York State Division of Criminal Justice Services, Uniform Crime / Incident-Based Reporting (2008)

### 3.5 Hospitals

There are five hospitals serving St. Lawrence County located in Gouverneur, Massena, Ogdensburg, Potsdam, and Star Lake.

Claxton-Hepburn Medical Center  
Physicians: 40  
Nurses: 172  
Bed Capacity: 130

Claxton-Hepburn Medical Center  
214 King Street  
Ogdensburg NY 13669  
(315) 393-3600

Canton-Potsdam Hospital  
Physicians: 61  
Nurses: 181  
Bed Capacity: 94

Canton-Potsdam Hospital  
50 Leroy Street  
Potsdam NY 13676  
(315) 265-3300

Clifton-Fine Hospital  
Physicians: 3  
Nurses: 12  
Bed Capacity: 20

Clifton-Fine Hospital  
Star Lake NY 13642  
(315) 848-3351

EJ Noble Hospital  
Physicians: 9  
Nurses: 64  
Bed Capacity: 47 + 40 Nursing

EJ Noble Hospital  
77 W Barney Street  
Gouverneur NY 13642  
(315) 287-1000

Massena Memorial Hospital  
Physicians: 25  
Nurses: 96  
Bed Capacity: 50

Massena Memorial Hospital  
One Hospital Drive  
Massena NY 13662  
(315) 764-1711

Source: New York State Dept of Health > Hospitals In NYS

## 4.0 MEDIA SERVICES

### 4.1 Newspapers

St. Lawrence County businesses and residents can receive local, regional, and national news and features from the following local and regional newspapers:

Ogdensburg Advance News (Sun)  
308 Isabella Street  
Ogdensburg NY 13669  
(315) 393-1003

North Country This Week (Weekly)  
19 Depot Street  
Potsdam NY 13676  
(315) 265-2068

Ogdensburg Journal (Mon-Fri)  
308 Isabella Street  
Ogdensburg NY 13669  
(315) 393-1003

Free Trader (Weekly)  
8 County Route 40  
Massena NY 13662  
(315) 769-7149

Courier-Observer (Tues-Sat)  
1 Harrowgate Commons  
Massena NY 13662  
(315) 769-2451

Clarkson Integrator (Weekly)  
Box 8710 Clarkson University  
Potsdam NY 13699  
(315) 265-9050

North Country Catholic (Weekly)  
308 Isabella Street  
Ogdensburg NY 13669  
(315) 393-2540

Watertown Daily Times (Sun - Sat)  
260 Washington Street  
Watertown NY 13601  
(315) 661-2304

Fourth Coast Entertainment  
520 Old Rt 11  
Canton NY 13617  
(315) 379-9543

St. Lawrence Plaindealer (Weekly)  
75 Main Street  
Canton NY 13617  
(315) 386-8521

## 4.2 Radio

There are ten radio stations in the St. Lawrence County area that provide a variety of musical, news, and informational programming to businesses and residents. A portion of most listening audiences is Canadian.

WMSA AM 1340 kHz  
2155 State Highway 420  
Massena NY 13662  
(315) 769-3591

Mix 96.1  
PO Box 210  
Massena, NY 13662  
(315) 769-3333

North Country Public Radio WSLU 89.5  
St. Lawrence University  
Canton NY 13617  
(315) 229-5356

Q-Country 102.9, YES FM 96.7, PAC 98.7  
One Bridge Plaza, Ogdensburg NY  
(315) 393-1220

WPDM AM 1470 KHz Country  
WSNN FM 99.3 MHz / 99 Hits FM  
Potsdam-Canton Road  
Potsdam NY 13676  
(315) 265-5510

WVNC Fm 96.7 MHz/ MIX 96  
56 Park Street  
Canton NY 13617  
(315) 379-9777

WTSC 91.1 The Source  
c/o Clarkson University  
10 Clarkson Ave, PO Box 8743  
Potsdam, NY 13699  
(315) 268-7658

WGIX 95.3 FM  
2315 Knox St, Box 239  
Ogdensburg, NY 13669  
(315) 393-1100

WYBG AM 1050 kHz  
PO Box 298  
Massena NY 13662  
(315) 764-0554

WAIH FM 90.3 MHz  
SUNY Potsdam  
Potsdam NY 13699  
(315) 267-4888

### 4.3 Television

News and information for the county is provided by WWNY TV 7 (Watertown), WWTI TV 50 (Watertown), YourNewsNow / YNN (a service of Time Warner Cable) and WPTZ (Plattsburgh). Additional news and information is provided by stations outside the region, including Syracuse and Canadian stations.

#### Regional Television Stations:

---

WWNY-TV 7News/FOX 28  
120 Arcade Street  
Watertown, NY 13601  
[WWNY-TV 7News/FOX 28 Online](#)  
(315) 788-3800

WCKN TV 30  
30 Graham Hall  
Potsdam NY 13699  
(315) 265-2073

WWTI-TV 50  
1222 Arsenal Street  
Watertown, NY 13601  
[WWTI-TV 50 Online](#)  
(315) 785-8850

WPTZ-TV  
5 Television Drive  
Plattsburgh, NY 12901-7252  
<http://www.wptz.com>  
(518) 561-5555

WPBS-TV  
1056 Arsenal Street  
Watertown, NY 13601  
[WPBS-TV Online](#)  
(315) 782-3142

#### Cable Television Providers:

---

Citizens Cablevision Inc.  
PO Box 256  
26 S. Main Street  
Hammond, NY 13646  
(315) 324-5911

Castle Cable TV, Inc.  
PO Box 339  
Hammond NY 13646  
(315) 482-9975

Time Warner Cable TV  
277 Andrews Street Road  
PO Box 180  
Massena NY 13662  
(315) 764-0244

Time Warner Cable TV  
1 Fine Street  
Ogdensburg NY 13669  
(315) 393-3090

Time Warner Cable TV  
2 Dodge Place  
Gouverneur NY 13642  
(315) 287-2610

Time Warner Cable TV  
22 ½ Elm Street  
Potsdam NY 13676  
(315) 265-8300

Slic Network Solutions  
51 Main Street, Suite 102  
Potsdam NY 13676  
(866) 261-7518

## Education

### 1.0 ST. LAWRENCE COUNTY PRIMARY AND SECONDARY SCHOOLS

#### 1.1 Enrollment in St. Lawrence County Public Schools

There are 17 school districts in St. Lawrence County, with a combined student body of 16,337. Funding is obtained from a number of sources, including State funds and local property taxes. The enrollment and class size figures below are for the 2007-08 school year. Pupil costs are for year ending 2007.

School District	Per Pupil Cost	Enrollment				Average Class Size
		PRE-K	K-6	7-12	TOTAL	
Brasher Falls	13,165	18	539	521	1,078	20
Canton	14,235	65	666	676	1,407	20
Clifton Fine	21,630	14	174	157	345	13
Colton Pierrepont	20,534	25	154	173	352	19
Edwards Knox	-	35	302	306	643	18
Gouverneur	13,329	36	878	829	1,743	19
Hammond	15,632	17	174	171	362	12
Hermon DeKalb	17,927	33	211	163	407	18
Heuvelton	15,401	36	263	295	594	17
Lisbon	17,098	33	280	254	567	19
Madrid Waddington	13,752	40	383	367	790	20
Massena	12,404	-	1,336	1,438	2,774	20
Morristown	17,523	19	183	192	394	14
Norwood Norfolk	13,858	34	522	535	1,091	18
Ogdensburg City	15,934	88	867	852	1,807	18
Parishville Hopkinton	14,389	0	256	250	506	15
Potsdam	14,827	60	700	717	1,477	20
<b>TOTAL</b>	-	553	7,888	7,896	16,337	-

Source: NYS Education Department (2008); U.S. Census Bureau Public Elementary-Secondary Education Finance Data (2007)

## 1.2 Enrollment in Private and Non-Public Schools

According to data provided by the New York State Education Department, there are 16 nonpublic schools located in St. Lawrence County, most of which are religiously affiliated.

All schools in the listing which include grades 9, 10, 11 or 12 are registered by the New York State Education Department with the exception of those noted as non-registered (NR) or registration-pending (RP). Definitions for registered high schools and those noted NR or RP appear below.

**Registered High School** - A registered high school is a high school which has been admitted to The University of the State of New York. A registered high school is authorized to issue Regents high school diplomas and may administer Regents examinations.

**Nonregistered High School (NR)** - A non-registered high school is a high school which has not applied for admission into The University of the State of New York. A non-registered high school is not authorized to issue diplomas and may not administer Regents examinations.

**High Schools with Registration Pending (RP)** - High schools with this notation have made application for admission into The University of the State of New York but have not yet completed the process. These high schools have all the privileges of registered high schools including the right to award diplomas and to administer Regents examinations until the registration process has been completed. These privileges are granted administratively for a specified period of time.

The data below is for 2009/2010:

School	Affiliation	Grade Span	Registration Status	Total Students
Rensselaer Falls Anderson Valley School	Amish	1 - 8		19
De Peyster Elm Grove School	Amish	1 - 8		25
Massena Holy Name of Jesus Academy	Roman Catholic	Unknown		Unknown
Canton Little River Community School	Nonsectarian	K - 12	RP	26
Rensselaer Falls Locust Grove School	Amish	1 - 7		19
Heuvelton Maple Ridge School	Amish	Elementary		Unknown
Rensselaer Falls Mud Lake School	Amish	Elementary		Unknown
Heuvelton Pleasant View School	Amish	2 - 8		22
De Peyster Plimpton School	Amish	1 - 8		9

Gouverneur St. James School	Roman Catholic	PK - 6		98
Ogdensburg St.Marguerite D'Youville Academy	Roman Catholic	PK - 6		108
Canton St. Mary's School	Roman Catholic	PK - 6		134
Heuvelton Townline School	Amish	1 - 8		32
Massena Trinity Catholic School	Roman Catholic	PK - 6		217
Depeyster Twin Maples School	Amish	1 - 8		26

Source: New York State Education Department

### 1.3 St. Lawrence County Student Performance

New York State requires the testing of students to determine their development of the basic skills taught in the New York State Public School systems. The types of tests are as follows:

English Language Arts (ELA) tests skills in listening, reading, and writing in grades 4 and 8. Mathematics knowledge, reasoning and problem solving skills are also tested in grades 4 and 8.

Regents Examinations are achievement tests based on State Education Department-recommended course of study for the high school level. Exams are developed by the State Education Department and a passing score is now required for graduation. There are four components: English, Mathematics, Global History, and US History and Government.

Students in St. Lawrence County perform well on State tests. National Merit and Regents Scholars are not uncommon.

Percentage of Students Passing Tests in 2007-08:

Central School District	Grade 4		Grade 8		Regents Examinations (65 or higher)			
	ELA	Math	ELA	Math	English	Math	Global History	US H&G
Brasher Falls	59%	77%	60%	83%	96%	88%	72%	92%
Canton	79%	85%	50%	74%	92%	90%	85%	98%
Clifton Fine	82%	91%	67%	73%	90%	100%	90%	86%
Colton Pierrepont	86%	95%	53%	70%	-	97%	74%	97%
Edwards Knox	52%	71%	55%	45%	84%	93%	65%	96%
Gouverneur	71%	80%	50%	55%	91%	83%	81%	96%
Hammond	65%	75%	59%	71%	100%	60%	68%	75%
Hermon Dekalb	75%	81%	54%	71%	96%	97%	65%	97%
Heuvelton	65%	73%	47%	33%	85%	94%	78%	85%
Lisbon	70%	73%	60%	79%	95%	96%	81%	98%
Madrid Waddington	86%	92%	50%	58%	77%	88%	48%	87%

Massena	76%	90%	58%	73%	95%	94%	89%	97%
Morristown	65%	72%	59%	79%	100%	98%	84%	94%
Norwood Norfolk	82%	91%	55%	66%	78%	95%	82%	87%
Ogdensburg City	69%	83%	43%	65%	84%	94%	64%	92%
Parishville Hopkinton	97%	100%	50%	83%	91%	98%	79%	100%
Potsdam	83%	91%	67%	78%	94%	92%	90%	97%
<b>New York State Avg</b>	<b>71%</b>	<b>84%</b>	<b>56%</b>	<b>70%</b>	<b>81%</b>	<b>76%</b>	<b>67%</b>	<b>83%</b>

Source: New York State Education Department

#### 1.4 Distribution of High School Graduates

For the school year ending in 2008, over 76% of St. Lawrence County's graduating high school seniors entered some form of post-secondary study.

Central School District	Regents Diplomas	Regents w/Advanced Designation	Percentage Entering College
Brasher Falls	83 %	30 %	76 %
Canton	88 %	52 %	85 %
Clifton Fine	63 %	25 %	56 %
Colton Pierrepont	79 %	29 %	85 %
Edwards Knox	100 %	49 %	72 %
Gouverneur	88 %	45 %	67 %
Hammond	86 %	32 %	79 %
Hermon Dekalb	85 %	54 %	78 %
Heuvelton	85 %	27 %	77 %
Lisbon	71 %	32 %	73 %
Madrid Waddington	88 %	53 %	80 %
Massena	93 %	40 %	79 %
Morristown	89 %	46 %	83 %
Norwood Norfolk	91 %	48 %	68 %
Ogdensburg City	95 %	57 %	84 %
Parishville Hopkinton	89 %	31 %	87 %
Potsdam	95 %	58 %	89 %
<b>New York State Avg</b>	<b>80 %</b>	<b>40 %</b>	<b>80 %</b>

Source: NYS Education Department

## 2.0 **BOARDS OF COOPERATIVE EDUCATIONAL SERVICES**

The Statewide system of Boards of Cooperative Educational Services (BOCES) was established in 1948. The BOCES function as an intermediate arm of the New York State Education Department. Through cooperative efforts of component school districts, the BOCES offer a wide variety of educational and support services to public educational agencies throughout the State. BOCES, through superintendents, board members, and other local school district personnel,

provide a focal point for the exchange of ideas and cooperative planning designed to improve the educational programs of our area. The three BOCES centers in St. Lawrence County are:

Northwest Tech Center 1000 Park Street Ogdensburg NY 13669 (315) 393-4570	Southwest Tech Center 3606 State Highway Rte 58 Gouverneur NY 13642 (315) 287-3590	Seaway Area Tech Center Route 56 Norwood NY 13668 (315) 353-2293
--	---	---

In addition, BOCES maintains adult learning centers in Canton, Gouverneur, Massena, Norwood, and Ogdensburg.

Vocational and occupational training is available to adults and youth through the three BOCES centers. Occupational education prepares young people for careers in vocational and technical fields while completing courses required for high school graduation. Most courses are designed for an 11th and 12th grade level; however, these courses are open to secondary students - students who are under 21 years of age with a high school diploma or over 21 years of age without a high school diploma. Students may select from approximately 20 different occupational courses. Although most classes are held during the day, adult evening courses are also available.

Additional services available include adult basic education, high school equivalency, and external high school diploma programs. A special education program is available to handicapped students from birth to age 21.

The Pinewood Opportunity Center (established in 1984) and the Richville Opportunity Center (1985) were established to assist young people who have not succeeded at traditional junior high or high school programs, and who lack the self-confidence and the academic skills to complete traditional high school courses. This program is designed to provide two years of solid academic studies combined with a work experience component that provides full credit toward a diploma.

#### BOCES ENROLLMENT (2007-2008)

Career & Technical Education .....	1,229
Alternative Education .....	161
Adult Basic Education .....	425
Special Education .....	354

Source: St. Lawrence-Lewis BOCES Report Card 2007-2008

### 3.0 HIGHER EDUCATION

HIGHER EDUCATION SUMMARY (2009)		
Educational Institutions	Degrees Offered	Enrollment
<i>4-Year Schools</i>		
Clarkson University	BS, BPS, MS, ME, MBA, PhD, DPT	3,045
SUNY Potsdam	BA, BS, MA, MS, MST, MS Ed,	4,332
St. Lawrence University	BA, BS, MEb, Certificates	2,401
SUNY Canton	AA, AS, AAS, BBA, BS, BT, MS, MBA, Certificates	3,000
<i>2-Year School</i>		
Ranger School of CESF	AAS	53

Data current as of 2009/2010 school year

#### 3.1 Colleges and Universities (Four-Year Programs)

Clarkson University <http://www.clarkson.edu/index.html>

Clarkson University, established in 1896, is an independent coeducational university offering both undergraduate and graduate programs. The University is located in the Village of Potsdam on a 640-acre campus situated midway between the Adirondack Mountains and the St. Lawrence River.

Degrees are granted in Bachelor of Science, Bachelor of Professional Studies, MBA, Master of Science, Master of Engineering, Ph.D. and DPT.

Clarkson is a nationally ranked research university offering more than 50 comprehensive programs in business, engineering, science, liberal arts, health sciences, and physical therapy. With 190 full-time teacher-scholars engaged in world-class research, Clarkson has developed an international reputation in the fields of Advanced Materials Science, Biotechnology, Environment & Energy, Entrepreneurship and Global Supply Chain Management.

The Andrew Schuler Educational Resources Center, located on Clarkson's hill campus, combines the University's library and computer centers. The library has holdings of over 224,306 volumes and approximately 1,350 periodicals. The library's collections place special emphasis on chemistry, energy, engineering, environmental science and technology, management, mathematics, and physics. The ERC is open to the St. Lawrence County community.

The University completed two major additions within the last ten years: the Cheel Campus Center and the New York Center for Advanced Materials Processing (CAMP). Cheel houses a hockey arena, student activities offices, dining service, post office, and a convenience store. CAMP is an 180,000-square foot research facility, sponsored in part by the New York State Legislature and private corporations.

CAMP is an interdepartmental organization aimed at increasing research interactions with industry. Recognizing the growing need for materials processing research and its own strengths in this field, Clarkson University established CAMP in 1985. The advanced materials researchers

work with solids such as metals, glasses, plastics, and ceramics. They utilize chemical processes to create new materials and physical processes to shape, mix, and fasten materials together.

The Center of Advanced Technology (CAT) is one of the thirteen centers funded within the State of New York. The center is designated by the State to conduct research within certain areas. Some of these research areas include:

- Fine particle processing
- Electronic fabricating processing
- Microcontamination control
- Polymer processing
- Materials processing in space

CAMP is currently enabling students and faculty to work with over 50 industrial companies, 30 of which are located in New York State (i.e. Xerox, IBM, Kodak, Corning, and Alcoa).

**State University of New York at Potsdam** <http://www.potsdam.edu/>

SUNY Potsdam traces its origins to the St. Lawrence Academy, which was founded in 1816. The college is located in the Village of Potsdam on 240 acres and is one of 13 State University of New York arts and sciences colleges.

The College offers both undergraduate and graduate programs. It is divided into three schools that offer arts and sciences, music, and teacher education programs. Degrees offered include a Bachelor's degree in Arts or Music, and a Masters degree in Arts, Music, Science in Education, or Science in Teaching. The School of Liberal Studies offers 38 majors, 39 minors, and 17 education certifications. A double degree engineering program is also available in connection with Clarkson University or the State University of New York at Binghamton. The college also offers two other partnership programs: 2+2 BS degree in Economics with two years at Canton and 2 years at Potsdam, 4+1 MBA with Clarkson with 4 years at Potsdam and 1 year at Clarkson.

The Frederick W. Crumb Memorial Library is located in the center of the campus. It houses more than 795,000 items, including 310,000 bound volumes, 480,000 microforms and other non-book materials, 62,500 federal and state documents, and 1,500 active periodicals.

An integral part of the College is the Crane School of Music. Crane plays a leading role in music and music education in New York State and the nation. Half of all the public school music teachers in New York State graduated from Crane. The Crane building complex features a concert hall, a music theater, and an extensive music library. Each year, the school's symphony orchestra, numerous ensembles, chamber groups, and choruses present over 200 concerts from classical to avant-garde music; most are free of charge.

The North Country Economic Research Center was created in 1986 to study the local economy and enhance the regions economic prospects. The Economics Department houses the center and researches regional economic trends and provides information to industry, government and the media.

The College's Office of Graduate and Lifelong Learning offers to the public more than 60 conferences and approximately 100 non-credit courses each year. Courses for both adults and

children, which include art, computing, sports, and recreation, typically attract 4,000 local residents yearly.

The College owns and operates a rustic recreational and educational facility 41 miles from Potsdam on the shores of Star Lake in the Adirondacks. The Star Lake campus offers students, faculty, and staff a variety of outdoor activities and is used for physical education courses. It is also available to the public for retreats and seminars.

**St. Lawrence University** <http://www.stlawu.edu/>

St. Lawrence University, founded in 1856, was the first coeducational college in New York State.

The university is an independent, residential liberal arts college which offers both undergraduate and graduate programs. The 1,000-acre campus is located in the Village of Canton. The university is centrally located between the Adirondack Park and the beautiful Thousand Islands region of the St. Lawrence River.

The University awards Bachelor degrees in Arts and Science, and Masters degrees in Education. The university offers over 30 majors including a Bachelor of Science degree offered in 11 areas of study and a Bachelor of Arts degree in 20 areas.

The University places special emphasis on internationalism. Programs coordinated by St. Lawrence are located in Great Britain, Kenya, Japan, Denmark, Spain, France, Austria, Canada, and portions of the former Soviet Union. The university participates in the International Student Exchange Program and offers a semester at the American University in Washington, D.C.

The Owen D. Young Library collection reflects the liberal arts curriculum of the University. The library's emphasis includes American and English Literature, United States History, Canadian History, and International Relations. The library is also a depository for selected US, Canadian, and New York State government documents, as well as United Nations documents. The library's holdings amount to over 800,000 reference materials including 344,000 volumes, 213,000 units of microtext, and 2,400 subscriptions.

In addition to the main campus, the University maintains two conference centers in the Adirondack Mountains that may be used for academic retreats or organizational meetings.

**State University of New York at Canton** <http://canton.edu/>

Canton College of Technology, established in 1906, is a public institution dedicated to providing two- and four-year degrees in business, science, technical fields, public services and health services. It was the oldest two-year college in New York State and recently began offering four-year degrees.

The college is located on Route 68, west of the Village of Canton, on a 555-acre campus overlooking the Grasse River.

SUNY Canton has majors in the health and medical technologies, business and public service, engineering technologies, and liberal arts and sciences. Bachelor degree programs (4-year) provide a well-rounded education with a focus on technical expertise and practical experience. The associate degree programs (2-year) are designed to prepare students for employment or transfer into a bachelor's program. Certificates (1-year) lead directly to employment after a one-year program of study.

Southworth Library is located at the center of the campus. The library has holdings of more than 40,000 books, 6,000 bound periodicals, 3,000 reels of microfilm, and 400 subscriptions. The library's collection emphasizes areas complementing the curriculum. A visualtek and optiscope are maintained for visually impaired students. The library also participates in On-Line Library Center Inc., a computerized database and network for shared library functions.

The college offers a range of non-credit courses through the Office of Continuing Education and Community Service.

### **3.2 Colleges and Technical Schools, (Two-year Programs)**

**College Of Environmental Science And Forestry, Ranger School**  
<http://www.esf.edu/rangerschool/>

The New York State Ranger School, established in 1912, is a unit of the State University of New York College of Environmental Science and Forestry at Syracuse. Students at the ranger school earn an Associate in Applied Science (AAS) degree in forest technology or surveying.

The Ranger School is located in the Adirondack hamlet of Wanakena on the bank of the Oswegatchie River near the inlet of Cranberry Lake. 2,800 acres of the James F. Dubuar Forest, as well as portions of the New York State Forest Preserve surround the school. It is by far the oldest forest technology program in the country and has nearly three thousand alumni.

The curriculum in forest technology is a 1-1 design. During the first year a student attends any college of his or her choice, completing courses of English, biology, math, economics and electives to total 30 credit-hours. Only the second year is spent at Wanakena in a concentrated study of forest technology or surveying. Each student is required to take Standard First Aid and the core exam of the Certified Pesticide Applicator series.

The school library contains highly specialized materials pertinent to the curriculum.

Graduates of the Ranger School are employed all over the country by government forestry units, last resource agencies, private forestry enterprises, and surveying firms.

### **3.3 The Associated Colleges of the St. Lawrence Valley**

The Associated Colleges of the St. Lawrence Valley was chartered by the Regents in 1970 to foster cooperative relationships among four distinct institutions:

- SUNY Canton
- Clarkson University

- SUNY Potsdam
- St. Lawrence University

The consortium allows the pooling of institutional resources – including 900,000 library volumes, 600 special and cultural events, and over 80 departments from which to choose courses. *For more information contact:*

Associated Colleges of the St. Lawrence Valley  
 Satterlee Hall  
 SUNY Potsdam  
 Potsdam, NY 13676  
 (315) 267-3331

## Labor & Employment

The County's labor force has been characterized as conscientious and easily trained. Following is detailed information on its labor force, employment, job market figures, wages and household income.

### 1.0 LABOR FORCE

The labor force of an area includes the people holding jobs and those seeking employment: the employed and the unemployed. Persons under 16, retired persons, non-working students, institutionalized persons, and those not seeking employment do not contribute to the labor force.

AVERAGE LABOR FORCE STATISTICS								
Year	Employed		Unemployed		Total Labor Force		Unemployment Rate	
	SLC	NYS	SLC	NYS	SLC	NYS	SLC	NYS
1990	45,489	8,339,800	3,881	469,056	49,370	8,808,856	7.9%	5.3%
1991	46,515	8,112,503	5,182	642,176	51,697	8,754,679	10.0%	7.3%
1992	46,523	7,979,726	5,094	755,216	51,617	8,734,942	9.9%	8.6%
1993	46,314	8,013,498	4,551	685,436	50,865	8,698,934	8.9%	7.9%
1994	46,576	8,080,243	4,812	601,744	51,388	8,681,987	9.4%	6.9%
1995	46,681	8,125,798	4,287	551,539	50,968	8,676,837	8.4%	6.4%
1996	46,823	8,228,913	4,154	551,632	50,977	8,780,545	8.1%	6.3%
1997	47,286	8,416,544	4,150	580,967	51,436	8,997,511	8.1%	6.5%
1998	47,688	8,546,550	4,152	512,250	51,840	9,058,800	8.0%	5.7%
1999	47,720	8,657,431	4,310	476,648	52,030	9,134,079	8.3%	5.2%
2000	46,212	8,751,441	2,782	415,531	48,944	9,166,972	5.7%	4.5%

2001	46,121	8,743,924	3,012	449,342	49,133	9,193,266	6.1%	4.9%
2002	46,493	8,721,428	3,312	577,608	49,805	9,299,036	6.6%	6.2%
2003	45,800	8,703,889	3,498	595,111	49,298	9,299,000	7.1%	6.4%
2004	45,730	8,816,013	3,442	544,072	49,172	9,360,085	7.0%	5.8%
2005	46,237	8,967,792	3,018	475,078	49,255	9,442,870	6.1%	5.0%
2006	46,791	9,091,712	2,911	438,391	49,702	9,530,103	5.9%	4.6%
2007	46,637	9,140,869	2,910	433,907	49,547	9,574,776	5.9%	4.5%
2008	46,519	9,152,934	3,617	526,683	50,136	9,679,617	7.2%	5.4%

Source: U.S. Bureau of Labor Statistics Local Area Unemployment Statistics Information and Analysis

### 1.1 Quality of Labor Force

The St. Lawrence County Office of Economic Development works with local employers on a daily basis through its administration of the Workforce Investment Act of 1998 (WIA) programs and the Industrial Development Agency. The WIA operations assist businesses with their employment and training needs and the Industrial Development Agency assists with their financial needs. Employers throughout St. Lawrence County have found the local labor force to be exceptional; their employees are productive, eager to learn, and have low absenteeism. The Office of Economic Development can put you in contact with employers who can share their experiences and knowledge of the labor force in the County. When asked to highlight positive qualities of the local labor force, private employers in the County mentioned:

- Mechanical aptitude
- Good work ethic and attitude
- Easily trained
- Low absenteeism

### 1.2 Employment Composition

From 2005-2007, for the employed population 16 years and older, the leading industries in St. Lawrence County were educational services, and health care, and social assistance (36%) and retail trade (11%).

Employment by Industry in St. Lawrence County, New York in 2005-2007

Agriculture, forestry, fishing and hunting, mining	4%
Construction	7%
Manufacturing	8%
Wholesale trade	1%
Retail trade	11%
Transportation and warehousing, and utilities	3%
Information	1%
Finance and insurance, real estate, rental and leasing	3%

Professional, scientific, management; and administrative and waste management services	4%
Educational services, health care, and social assistance	36%
Arts, entertainment and recreation, accommodation, and food services	9%
Other Services (Except public administration)	5%
Public administration	8%

Source: American Community Survey, 2005-2007

According to the summary from the 2005-2007 American Community Survey, the most common occupations were: management, professional, and related occupations (31%); sales and office occupations (23%); service occupations (23%); production, transportation, and material moving occupations (12%); and construction, extraction, maintenance and repair occupations (11%).

Sixty-seven percent of the people employed were private wage and salary workers; 24 percent Federal, state, or local government workers; and 8 percent were self-employed.

Seventy-six percent of St. Lawrence County workers drove to work alone from 2005-2007, 12 percent carpoolled, fewer than 0.5 percent took public transportation, and 6 percent used other means. The remaining 6 percent worked at home. It took, on average, 20.3 minutes for commuters to get to work.

The median income of households in St. Lawrence County was \$39,815. Seventy-two percent of the households received earnings and 25 percent received retirement income other than Social Security. Thirty-three percent of the households received Social Security. The average income from Social Security was \$13,880. These income sources are not mutually exclusive; that is, some households received income from more than one source.

From 2005-2007, 16 percent of people were in poverty. Nineteen percent of related children under 18 were below the poverty level, compared with 11 percent of people 65 years old and over. Thirteen percent of all families and 38 percent of families with a female householder and no husband present had incomes below the poverty level.

St. Lawrence County Job Statistics (Non-Farm Data):

	2008	
	Employment	Avg Weekly Wage
Total all Industries	37,053	\$678
Total Government	2,955	\$668
Total Private Industry	26,693	\$635
Agriculture Forestry	473	\$621
Fishing & Hunting	-	-
Mining	355	\$1,068
Utilities	207	\$1,566
Construction	1,412	\$872
Manufacturing	3,453	\$1,117
Wholesale Trade	453	\$743
Retail Trade	5,186	\$418
Transportation & Warehousing	861	\$699
Information	312	\$724
Finance & Insurance	663	\$736
Real Estate and Rental and Leasing	319	\$473
Professional & Technical Services	633	\$631
Mgmt of Companies & Enterprises	454	\$877
Administration & Support, Waste	861	\$424
Educational Services	1833	\$843
Health Care and Social Assistance	5,552	\$625
Arts, Entertainment and Recreation	134	\$285
Accommodation and Food Service	2,843	\$227
Other Services Ex. Public Admin	1,073	\$394
Public Administration	2,537	\$626
Unclassified	34	\$274

Source: Economic Development Intelligence System; NYS DOL

Quarterly Workforce Indicators – Private Sector Jobs, 2006

	Count
Number of employers	1,971
Employment (beginning of 2 <sup>nd</sup> quarter)	16,610
Employment, stable jobs	14,606
Separations, stable jobs	1,246
New Hires, stable jobs	1,120
Firm Job Gain	1,893
Firm Job Loss	693
Employment (reference quarter)	21,047
Average Monthly Earnings, Stable Jobs	1,957
Average Monthly Earnings, Separations from Stable Jobs	861
Average Monthly Earnings, New Hires, Stable Jobs	1,443

Source: US Census Bureau, LED Origin-Destination Data Base

**2.0 INCOME**

**2.1 Personal Income**

Total personal income includes all sources: net labor and proprietor's income, property income, and transfer payments.

County of Residence	Total	Net Earnings	Property Income	Transfer Payments
New York State	\$ 790,073.90	\$ 525,743.40	\$ 132,762.60	\$ 131,567.90
St. Lawrence	2,517.80	1,532.80	303.10	681.90

Source: NYS Statistical Yearbook 2008 (figures in millions)

## 2.2 Labor and Proprietors' Income

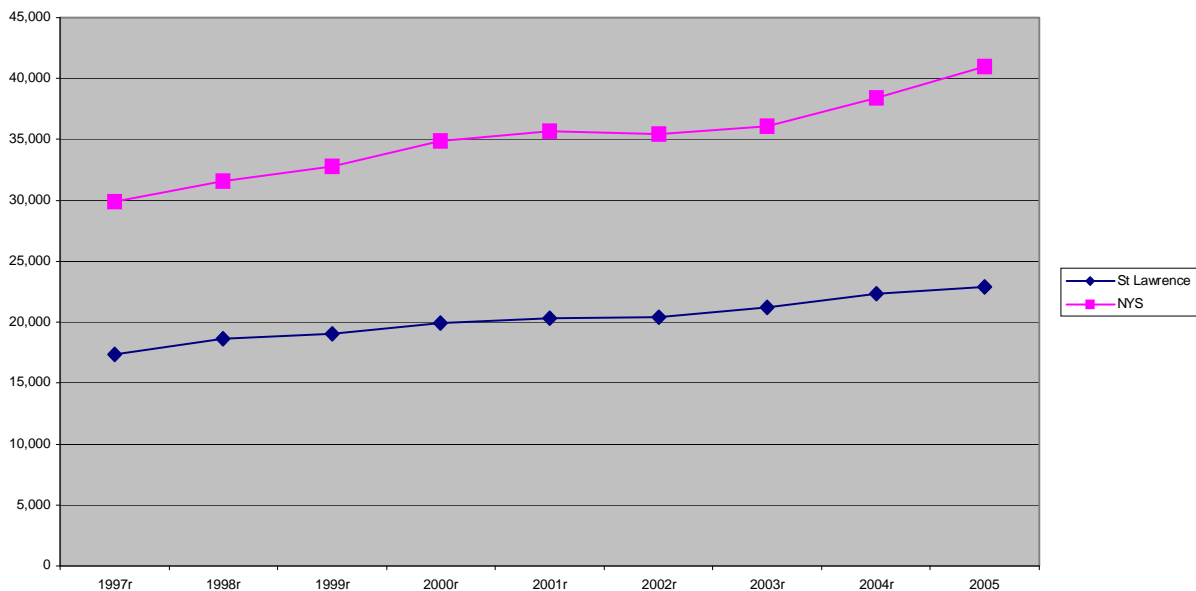
### LABOR AND PROPRIETORS' INCOME EARNED (2005) (in millions)

<u>Industry</u>	<u>St. Lawrence County</u>	<u>New York State</u>
Farms	28.6	\$ 941.9
Forestry	11.5	1,165.1
Mining	14.3	1,410.9
Utilities	20.9	6,134.2
Construction	74.3	25,374.1
Manufacturing	259.5	44,389.2
Wholesale Trade	19.9	28,482.0
Retail Trade	130.2	31,490.2
Transportation and Warehousing	30.2	13,220.1
Information	15.7	37,858.1
Finance & Insurance	36.2	108,381.3
Real Estate	11.2	17,255.3

Source: NYS Statistical Yearbook 2008

## 2.3 Per Capita Income

The following graph represents the growth trends of per capita personal income in St. Lawrence County and New York State for the period of 1997-2005. During this period, St. Lawrence County's per capita income grew by 32 percent while the state's increased by 38 percent.



Source: NYS Statistical Yearbook 2008

Industry in St. Lawrence County has always involved and been shaped by agriculture and the natural resources found throughout the county. These resources include abundant supplies of water, land suited for dairy farming, timber, zinc, and talc.

Approximately 5% of the workers in the County are directly employed on farms. While the absolute numbers of farms and milk cows have been decreasing over the past 40 years, the amount of milk produced has increased tremendously due to improved breeding and management techniques.

Another industry that has adapted to conditions in the North Country is the generation of electric power: Almost 1000 megawatts of power are produced annually from the County's rivers.

Aluminum manufacturing and electronics assembly industries have also joined the local economy and taken advantage of the excellent business climate of St. Lawrence County.

Industry employment data on the next several pages is from the Bureau of Labor Statistics for 2008.

<b>1.0 AGRICULTURE</b>
------------------------

In 2008, there were 347,246 acres in farms, 20 percent of the County's total 1,715,456 acres. There were 1,330 farms in the county averaging 261 acres per farm. St. Lawrence County ranks 3<sup>rd</sup> in the state for number of farms and 2<sup>nd</sup> for land in farms. In 2007, according to the Census of Agriculture, the market value of all agricultural products sold from county farms was \$140.1 million. Total sales averaged \$105,377 per farm. The leading products sold were: Milk and Dairy; Cattle and Calves; Hay; Grains and Dry Beans; and Vegetables and Potatoes.

The average value of land and buildings per farm in 2007 was \$351,391. Machinery and equipment were valued at \$81,940 per farm. Total production expenses in 2007 were \$106.9 million for an average of \$80,441 per farm. The US Census showed 61 percent of the farm operators reported farming as their principal occupation.

The average age of the operator was 55.5 years. The U.S.D.A.'s Economic Research Service showed the median household income in 2007 was \$39,035.

**Top Milk Producing Counties in NYS (Ranked by Total Production in 2003)**

Rank	County	Total Milk Produced	
		1993	2003
		(1,000 lbs)	
1	Wyoming	687,000	1,000,000
2	St. Lawrence	591,000	625,000
3	Cayuga	408,000	610,000
4	Jefferson	495,000	571,000
5	Genesee	311,000	460,000
6	Lewis	441,000	456,000
13	Clinton	289,000	340,000
19	Franklin	278,000	295,000
46	Essex	47,000	33,000

Northern New York is still a strong and active player in the dairy industry in New York State, with St. Lawrence County ranked as the 2<sup>nd</sup> in New York State for total milk production.

Source: New York Agricultural Statistics Service, Milk Production in Northern New York

The information presented here is primarily from the most recent New York State Census of Agriculture, conducted in 2007.

<b>Agricultural Summary</b>	<b>1987</b>	<b>1992</b>	<b>1997</b>	<b>2007</b>
Total number of Farms	1,602	1,367	1,363	1,330
Percentage of land area used for farming	26%	23%	23%	20%
Cropland harvested (acres)	173,800	164,320	165,579	146,545
Total Value of all Farm Products	\$80,583,000	\$94,173,000	\$89,078,000	\$140,151,000
Total Value of all Dairy Products	\$67,132,000	\$78,220,000	\$73,801,000	112,797,000
Number with sales of \$10,000 or more	952	822	742	549
Number with sales of \$100,000 or more	244	301	264	197
Value of Land and Buildings	\$216,475,056	\$239,769,000	\$262,536,000	\$351,391,000
Value of Machinery and Equipment	\$62,833,644	\$70,317,000	\$65,775,000	81,940,000
Average Farm Size (acres)	285	290	291	261
Average Value of Land and Buildings	\$135,128	\$175,269	\$192,334	N/A
Average Value of Machinery and Equipment	\$39,222	\$51,590	\$48,187	N/A
Corn and Grain (acres)	5,810	5,664	5,894	N/A
Corn for Silage (acres)	28,232	30,317	32,606	35,900
Hay	142,220	132,472	135,106	128,800
Milk Cows	45,876	41,899	40,567	31,300
Heifers and Heifer Calves	35,240	33,014	31,749	N/A
Steers, Steer Calves, Bulls, and Bull Calves	3,981	3,847	3,403	N/A
Beef Cows	2,273	3,218	4,176	4,400
Hogs and Pigs	2,333	1,653	1,587	< 1,000
Sheep and Lambs	1,781	2,180	2,277	2,065
Chickens (3 months and older)	11,195	3,002	3,741	8,240*

\*Layers, Broilers and other meat-type chickens  
Source: 2007 Agricultural Census

## 1.1 Agricultural Districts

There are seven agricultural districts in St. Lawrence County. Agricultural districts enjoy special zoning and programs designed to assist resident farms, and must be approved by the County Board of Legislators.

<b>Agricultural District</b>	<b>Acreage</b>
#1 - Fowler, Gouverneur, Rossie areas	31,735
#2 - Canton area	7,209
#3 - Stockholm area	57,198
#4 - Hammond, Morristown, and Oswegatchie areas	76,310
#5 - Madrid, Lisbon, Waddington, Louisville, Norfolk, West Potsdam, West Canton, and Oswegatchie areas	214,149
#6 - Depeyster and Macomb areas	70,729
#7 - DeKalb and Hermon areas	61,162

Source: St. Lawrence County Cooperative Extension

## 1.2 Additional Agricultural Industries

The County's cheese, beef, and maple syrup operations illustrate the secondary impact of farms in the area. St. Lawrence County's farms supply the resources for a variety of secondary industries that employ people and in turn create a multiplier effect in retail and commercial businesses.

Milk intended for purposes other than fluid milk consumption is one of St. Lawrence County's primary raw material resources. Every year, hundreds of millions of pounds of milk are processed by the area's seven cheese and yogurt plants.

St. Lawrence County is also a major producer of maple syrup. Much of the syrup is produced and processed on dairy farms as an off-season occupation. The majority of the crop, however, is sold outside the County.

Source: 2007 Census of Agriculture

<b>2.0 LUMBER, LOGGING &amp; WOOD PRODUCT MANUFACTURING</b>
---

Total Number of Employees: 221

Annual Payroll: \$ 9,384,862

NAICS Classification	Reporting Units	Average Annual Employment	Annual Wages
Forestry & Logging	5	118	\$6,215,414
Ag / Forestry Support Activity	8	29	\$1,167,650
Wood Product Mfg	9	74	\$2,001,798

Source: Quarterly Census of Employment & Wages, State of NY and US Bureau of Labor Statistics 2008

St. Lawrence County has large forest resources, making the importance of the logging industry a natural development. Of the 1,771,500 acres in the County, 1,110,734 acres (or 63% of the County's land area) are classified as timberland. An additional 140,500 acres are considered productive-reserved forestland.

St. Lawrence County timber species include a variety of hardwoods such as maple, birch, cherry, beech, and some oak and softwoods such as pine, hemlock, and spruce. The timber resources in St. Lawrence County are harvested by a logging infrastructure that focuses its activities primarily in the Adirondack foothill and mountain section of the County. The harvested timber has many destinations, including sawmills located in the County, Canadian processing destinations and pulp mills located outside of the County.

Forest-type Group	Stand-size class				Total
	Large Diameter	Medium Diameter	Small Diameter	Nonstocked	
White / red / jack pine	44,242	6,466	1,717	--	52,424
Spruce / fir	39,855	26,514	9,528	--	75,897
Exotic softwoods	6,869	--	--	--	6,869
Oak / pine	34,644	--	6,869	--	41,512
Oak / hickory	22,417	41,839	47,996	--	112,252
Elm / ash / cottonwood	--	65,340	36,772	--	102,112
Maple / beech / birch	324,118	225,908	102,573	--	652,598
Aspen / birch	11,858	23,831	26,228	--	61,917
Nonstocked	--	--	--	5,152	5,152
<b>Totals:</b>	<b>484,003</b>	<b>389,897</b>	<b>231,682</b>	<b>5,152</b>	<b>1,110,734</b>

Source: USDA Forest Service, FIDO 2006 "Area by forest type group and stand-age class (acres)

### 3.0 PAPER INDUSTRY

Total Number of Employees: 328

Annual Payroll: \$ 17,338,928

In St. Lawrence County there are a total of four paper mills. All of these paper mills operate on secondary fiber and virgin pulp. The latter is produced at mills outside of the County. In terms of employment and taxes, these paper mills are extremely important to the County economy.

Source: Quarterly Census of Employment & Wages, State of NY and US Bureau of Labor Statistics 2008

### 4.0 MINERAL EXTRACTION AND PRIMARY METALS INDUSTRIES

Total Number of Employees: 1,874

Annual Payroll: \$ 130,670,082

NAICS Classification	Reporting Units	Average Annual Employment	Annual Wages
Primary Metal Manufacturing	5	1,573	\$116,436,523
Fabricated Metal Manufacturing	10	196	\$8,432,471
Mining (except Oil & Gas)	8	105	\$5,801,088

Source: Quarterly Census of Employment & Wages, State of NY and US Bureau of Labor Statistics 2008

There are three main types of mineral extraction and primary metals industries in St. Lawrence County: Aluminum, Zinc, and Talc. A major aluminum plant (East and West Alcoa plants) is located in the Massena area to access lower-cost hydropower and water for process cooling. Industries that focus on the mining of zinc and talc are centered in the Gouverneur area.

### 5.0 ELECTRONICS INDUSTRY

Total Number of Employees: 161

Annual Payroll: \$ 10,458,281

NAICS Classification	Reporting Units	Average Annual Employment	Annual Wages
Computer & Electronic Mfg	4	138	\$9,766,369
Electrical Equip & Appliances	4	23	\$691,912

Source: Quarterly Census of Employment & Wages, State of NY and US Bureau of Labor Statistics 2008

Over the last 30 years a number of electronic assembly industries have located in the industrial park in the Ogdensburg area. Most of the electronics assembly plants are branches of Canadian operations.

## 6.0 INSTITUTIONAL / GOVERNMENT INDUSTRY

Total Number of Employees: 20,072

Annual Payroll: over \$ 734,309,628

St. Lawrence County has a number of large institutional, federal, State and local government employers. There are three State correctional facilities, one State psychiatric center, St. Lawrence Seaway Development Corporation, and five colleges in the County.

Institutions	Average Annual Employment	Annual Wages
Federal Government (2008) Including St Lawrence Seaway	587	\$34,584,075
State Government (2008) Including Corrections *	3,357	\$1,163,941,991
Local Government	6,411	\$226,762,266
Hospitals (2008)	1,858	\$80,116,663
Nursing & Residential Care Facilities (2008)	1,497	\$35,158,640
Private Colleges & Universities (2000)	1,482	\$51,974,000
Social Assistance (2008)	1,064	\$20,094,993
Public Grade Schools (2000)	3,773	\$120,985,000
Private Grade Schools (2000)	43	4692,000

Source: Quarterly Census of Employment & Wages, State of NY and US Bureau of Labor Statistics 2008

## 7.0 UTILITIES

Total Number of Employees: 207

Annual Payroll: \$ 16,891,510

St. Lawrence County is the site of the Robert H. Moses Power Dam in Massena, one of the New York Power Authority's major hydroelectric dams. It has a generating capacity of 800 megawatts, a significant portion of which is consumed by the aluminum industry near Massena.

National Grid's operations include the transmission and distribution of electricity--National Grid USA maintains 84,000 miles of overhead and underground transmission and distribution lines. Through its subsidiaries, the company provides electrical services to approximately 3.2 million customers in upstate New York, Massachusetts, Rhode Island, and New Hampshire. Its Niagara Mohawk subsidiary, which was acquired in 2002, provides natural gas delivery.

Brookfield Power has extensive hydro-generation facilities in the County. With 75 generating stations throughout New York on 15 river systems, they generate more than 3,000 Gigawatt Hours annually.

Natural gas is also a major fuel source for North Country residents and businesses. The St. Lawrence Gas Company is supplied directly from the Trans-Canada Pipeline.

## 8.0 TOURISM

While not as well known as the surrounding regions of the Thousand Islands or Lake Placid, St. Lawrence County has a significant tourism trade. In fact, many visitors prefer the quiet and less crowded aspects of the County. According to the St. Lawrence County Chamber of Commerce, visitors who come to ski, fish, and hunt in the County spent \$103.7-million in 2007, generating \$6.4-million in local sales tax revenue and \$6.6-million in State taxes.

Tourism accounted for 1,782 jobs – with 1,232 of those directly in tourism – resulting in direct labor income of \$25.6-million. In fact, when you add in the direct, indirect and induced total labor from tourism, the result is \$43.5-million – about 3.5% of the total income paid in the county annually.

Specifically, lodging realized impacts of \$17.6-million, recreation was \$3.2-million, food & beverage was \$22.7-million, retail & service was \$14.8-million and \$43-million was realized by tourists who purchased second homes in the region.

## 9.0 RETAIL TRADE

There are at least four communities in St. Lawrence County that provide major shopping opportunities for both residents and visitors. Seven principal shopping centers serve the five most populous communities in the County. One of them, the St. Lawrence Centre mall in Massena, also attracts Canadian consumers. These shopping centers provide a variety of specialized merchandise to county residents.

Shopping centers provide only a portion of the shopping and commercial employment opportunities in the County's retail industry. All five major population centers have a sizeable downtown commercial district. Individual districts are difficult to gauge, but overall it is estimated that 5,179 people were employed in the County's 415 retail establishments in 2008, generating a combined annual payroll of about \$112,853,867.

Source: Quarterly Census of Employment & Wages, State of NY and US Bureau of Labor Statistics 2008

## Government Regulations

The following section of the County Profile is designed for promoting and developing business and industry in St. Lawrence County. It will acquaint you with the elected officials representing our communities on the local, state, and federal level. Also, detailed information is presented concerning the financial and technical services available to new and established businesses throughout the area. Some industrial properties will be identified.

The St. Lawrence County Office of Economic Development can assist your business with its employment needs by providing hiring incentives through the Workforce Investment Act of 1998 program. Loan information, financial services, and technical expertise are available through the Office of Economic Development. These combined services are provided by experienced staff

who are ready to develop and customize programs not only for established St. Lawrence County businesses, but also for firms considering the County as a location.

## 1.0 GOVERNMENT

### 1.1 County Government

The governing body of St. Lawrence County is the County Board of Legislators, made up of 15 elected legislators. It is distinct from the 32 elected Town Supervisors. The board elects a Chairman from among its members, who serves as the chief elected officer of county government.

#### Chairman

Gregory Paquin  
St. Lawrence County Courthouse  
48 Court Street  
Canton, NY 13617  
(315) 379-2276

#### County Administrator

Karen St. Hilaire  
48 Court Street  
Canton NY 13617  
(315) 379-2276

### 1.2 Elected Officials

St. Lawrence County falls into Districts 118 and 122 of the New York State Assembly, Districts 47 and 48 of the New York State Senate, and District 24 of Congress.

#### *New York State Assembly - 118<sup>th</sup> Assembly District*

The Honorable Addie J. Russell  
Legislative Office Building, Room 325, Albany, NY 12248  
(518) 455-5545

#### *New York State Assembly - 122<sup>nd</sup> Assembly District*

The Honorable Dierdre Scozzafava  
Legislative Office Building, Room 532, Albany NY 12248  
(518) 455-5545

#### *New York State Senate - 47<sup>th</sup> Senate District*

The Honorable Joe Griffo  
Legislative Office Building, Room 302, Albany, NY 12247  
(518) 455-3334

#### *New York State Senate - 48<sup>th</sup> Senate District*

The Honorable Darrel Aubertine  
903 Legislative Office Building, Albany, New York 12247  
(518) 455-2761

*United States Congress - 24<sup>th</sup> Senate District*  
The Honorable William Owens  
Rayburn House Office Building  
Room 2366  
Washington DC 20515  
(202) 225-4611

*United States Senate*  
The Honorable Charles Schumer  
United States Senate  
Hart Senate Office Building  
Room 313  
Washington DC 20510  
(202) 224-6542

The Honorable Kirsten Gillibrand  
United States Senate  
478 Russell  
Washington DC 20510  
(202) 224-4451

### 1.3 Customs

The U.S. Customs & Border Protection – now part of the Dept. of Homeland Security – has offices located at both the Massena-Cornwall (Ontario) International Bridge and the Ogdensburg-Prescott (Ontario) Bridge. The duties and responsibilities of a U.S. Customs Agent include assessing and collecting import revenues; processing mail, baggage, cargo, and persons entering this country; and enforcing quotas and other import-export restrictions. The U.S. Customs office is responsible for the movement of merchandise in and out of the United States. Customs bonds may be required of anyone involved in the importation of merchandise. Custom form 4811 must be completed for the handling and entry of merchandise.

Bonded warehouse regulations are also administered by U.S. Customs. Information regarding the types of customs-bonded warehouses, their locations, and their operations can be obtained from the district office in Ogdensburg.

#### *U.S. Offices*

U.S. Customs & Border Protection  
127 North Water Street  
Ogdensburg, NY 13669  
Phone: (315) 393-1150

U.S. Customs & Border Protection  
135 Trippany Road  
Massena, New York 13662  
Phone: (315) 769-2342

## 1.4 Immigration and Naturalization

### *General Border Crossing*

The Western Hemisphere Travel Initiative (WHTI) requires U.S. and Canadian travelers to present a passport or other document that denotes identity and citizenship when entering the United States.

The goal of WHTI is to facilitate entry for U.S. citizens and legitimate foreign visitors, while strengthening U.S. border security. Standard documents will enable the Department of Homeland Security to quickly and reliably identify a traveler.

For a complete list of resources that will make border crossing as smooth as possible, please visit [www.GetYouHome.gov](http://www.GetYouHome.gov)

### *Working in the U.S.*

The United States welcomes thousands of foreign workers in multiple occupations or employment categories every year. These include artists, researchers, cultural exchange participants, information technology specialists, religious workers, investors, scientists, athletes, nurses, agricultural workers and others.

All foreign workers must obtain permission to work legally in the United States. Each employment category for admission has different requirements, conditions and authorized periods of stay. It is important that you adhere to the terms of your application or petition for admission and visa. Any violation(s) can result in removal or denial of re-entry into the United States.

For a list of appropriate Visas, please visit the "Working In The U.S." section of the U.S. Citizenship & Immigration Services at <http://www.uscis.gov/portal/site/uscis>

### *Offices*

U.S. Immigration and Naturalization Service  
Route 37, Rooseveltown NY  
(315) 764-0310

U.S. Immigration and Naturalization Service  
Bridge Approach Rd, Ogdensburg, NY 13669  
(315) 393-0770

**2.0 TAX REQUIREMENTS**

Businesses and residents in St. Lawrence County are subject to Federal, State, and local regulations and taxing.

**2.1 Federal Requirements**

Federal Income Tax

Sole Proprietorship ..... Schedule C or F, Form 1040

Limited Partnership ..... Schedule K-1, Form 1065

Corporation ..... Schedule K-1, Form 1120S or Form 1120

Withholding of Federal Income Tax from Wages

Form W-4, "Employer Withholding Allowance Certificate"

Federal Unemployment Insurance and Tax Depositing

Form 508, "Federal Unemployment Tax Deposit"

Other Requirements

Social Security Taxes and Workers' Compensation

*Offices*

Tax Assistance and Information: Tax Forms and Publications:

Internal Revenue Service 1-800-829-3676 1-800-829-1040

Social Security Administration

818 Commerce Park Drive

Ogdensburg, NY 13669

(866) 572-8369

The Worker's Compensation Board

935 James Street

Syracuse, NY 13202

(866) 802-3730

**2.2 State Requirements**

*State Income Tax*

Form TSB-M-85(8)-1

*Corporate Franchise Tax*

Form TSB-M-85(8)C

*Withholding of State Income Tax from Wages*

Form W-4: "Employer Withholding Allowance Certificate"

Form IT-2100: "Employer's Withholding Tax Instructions"

Form IT-2100.1: "New York State Withholding Tax Tables and Methods"

*State Tax Depositing*

Contact the New York State Department of Taxation and Finance

*Other Requirements*

State Unemployment Insurance

*Offices*

NYS Department of Taxation and Finance  
Tax Assistance and Information  
W.A. Harriman Campus  
Albany, NY 12227-0125  
(518) 438-8581  
In NY: 1-800-225-5829

NYS Department of Labor  
Unemployment Insurance Division  
Liability and Determination Section  
35 Glenn Street  
Massena, NY 13662  
(315) 769-3596

**2.3 County Requirements**

Local, County, and school taxes are based on a percentage of the assessed value of real property and depend on local rates.

*Sales and Use Taxes*

The New York State sales and use tax is 4% while the St. Lawrence County rate is 3%, making an effective rate of 7%. These taxes apply to:

- sales and rental of tangible property
- enumerated services
- consumer's utility charges
- hotel occupancies
- restaurant meals
- admission charges and club dues

*Office*

St. Lawrence County Department of Real Property  
St. Lawrence County Court House  
48 Court Street  
Canton, NY 13617  
(315) 379-2272

*Real Property*

City, Town and County taxes are based on a percentage of the assessed value of the real property and depend upon local tax rates. Tax Rates, as of January 2010, were listed with the Real Property Office as:

Town or City	County	Town / City	Equalization
City of Ogdensburg	8.155323	15.759506	100.0
Brasher	8.961893	1.472011	91
Canton	8.162217	2.291904	100.0
Clare	146.989913	87.669571	4.25

Clifton	6.263812	1.605919	100.00
Colton	209.110839	37.359316	3.9
Dekalb	3.326010 – inside 8.155323 – outside	5.173710	100.0
Depeyster	8.155323	1.820366	100.0
Edwards	8.175068	8.127277	100.0
Fine	6.316878	2.715366	90.0
Fowler	47.972487	7.002371	17.0
Gouverneur	8.861592	2.470290	92.03
Hammond	8.155323	0.438166	100.0
Hermon	8.445888 – inside 5.891274 – outside	7.228922	97.0
Hopkinton	9.594497	1.626861	85.0
Lawrence	8.155323	1.973518	100.0
Lisbon	9.708718	0.274782	84.0
Louisville	9.061470	0.833504	90.0
Macomb	12.546650	1.854228	65.0
Madrid	8.155323	3.152385	100.0
Massena	8.168282	3.555625	100.0
Morristown	8.155323	3.103160	100.0
Norfolk	10.068300	2.086286	81.0
Oswegatchie	8.864481	3.011992	92.0
Parishville	170.613446	48.205997	4.78
Piercefield	8.155323	0.485087	100.0
Pierrepoint	8.407549	0.635222	97.0

Pitcairn	12.172123	n/a	67.0
Potsdam	8.321758	2.324798	98.0
Rossie	5.634680	3.679811	87.0
Russell	8.769164	3.099901	93.0
Stockholm	9.163284	0.628503	89.0
Waddington	8.161472	2.226240	100.0

Source: St. Lawrence County Real Property Office

<http://www.co.st-lawrence.ny.us/data/files/departments/RealProperty/Town-CountyTaxRates.pdf>

Visit the link above for complete list of taxes for Fire Districts, Medicaid, Chargebacks, Light, Water & Sewer.

## 2.4 Other Requirements

### Business Permits and Regulatory Assistance

The [Governor's Office of Regulatory Reform's](#) Business Permit Assistance program is a resource where prospective business owners can find out what they need to do to comply with New York State's permit and licensing requirements. Licenses and permits from federal, state, and [local governments](#) give business entities the authority to carry on specific business activities. Your business may be subject to licensing by one or all levels of government. The Governor's Office of Regulatory Reform plays a vital role for business owners by providing compliance information, forms and contacts.

*NY State Governor's Office of Regulatory Reform - Business Permit Assistance Unit*

Empire State Plaza

Agency Building 1, 4th Floor

P.O. Box 2107

Albany, NY 12220-0107

800-342-3464

518-474-8275

[permits@gorr.state.ny.us](mailto:permits@gorr.state.ny.us)

## 3.0 GOVERNMENT ASSISTANCE

### 3.1 St. Lawrence County Office of Economic Development

*Workforce Investment Act of 1998 and the Workforce Investment Board*

The St. Lawrence County Office of Economic Development administers a variety of employment and training programs under provisions of the Workforce Investment Act of 1998 (WIA). The WIA

works hand in hand with local employers to increase their employment opportunities in St. Lawrence County. New and expanding businesses throughout St. Lawrence County can substantially reduce their training costs through participation in the WIA On-The-Job Training (OJT) programs. Through an OJT contract, the eligible individual is hired by the employer, trained on the job, then maintained in full-time, non-seasonal employment. The employer may receive up to 50% reimbursement for the wages paid to the trainee during the training period. Payments are made directly to the employer, continue on a monthly basis during the duration of the contract, and are meant to reimburse the employer for the costs associated with training dislocated workers and/or economically disadvantaged persons.

Occupational training is provided to eligible participants through the classroom/vocational training component of WIA. Technical skills training is conducted at local educational facilities including, but not limited to, the area BOCES centers. Training is provided in many occupational demand categories, including computer programming and operations, secretarial skills training, and electronic, electrical and engineering technology. Through the Office of Economic Development, job-specific classroom training can be provided by educational institutions at no cost to eligible workers.

In addition, WIA program operations include the design and development of customized training programs. The customized training may occur at the employer's site or may be provided by a training vendor able to meet the employer's requirements. The financial and technical assistance for this customized training is provided by the WIA program.

The St. Lawrence County Workforce Investment Board (WIB) cooperates with the County in directing Workforce Investment Act (WIA) programs administered by the County's Office of Economic Development. The WIB establishes policies under which employment and training programs are delivered to unemployed, underemployed, and economically disadvantaged County residents. To ensure that those most in need of services receive appropriate training the WIB identifies the specific training programs most likely to lead to unsubsidized employment for participants. The WIB is responsible for and devotes its energies to bringing the needs and resources of private enterprise to deal cooperatively with the problems of unemployment and industrial dislocation in St. Lawrence County.

The WIB is comprised of executives from both large and small businesses, plus representatives from labor, education, government, service and community based organizations in St. Lawrence County. The majority of the 23 members are representatives from private industry.

*Contact*

St. Lawrence County Office of Economic Development  
80 State Highway 310, Suite 6  
Canton, New York 13617-1496  
(315) 379-9806  
[www.slconestop.com](http://www.slconestop.com)

**3.2 St. Lawrence County Industrial Development Agency**

The St. Lawrence County Industrial Development Agency (IDA) has a long-standing record of active support for economic development efforts in St. Lawrence County. During the past 30

years, the IDA has authorized the issuance of tax-exempt and taxable Industrial Development Bonds (IDB's) to improve economic opportunities throughout St. Lawrence County. In 2008, they provided \$117,603,534 in combined assistance from the IDA, IDALDC loan financing, LDC micro loan financing, GMEDF loan financing and WIB job training assistance.

Working in conjunction with the county Office of Economic Development, the Industrial Development Agency also assists firms in preparing suitable loan applications and submitting them to appropriate government agencies and banks. The office acts as liaison with banks, government agencies and regulatory commissions to coordinate and expedite a business project. The office will also work on behalf of investors to obtain tax abatements and other business incentives from local municipal jurisdictions.

The Industrial Development Agency can also assist firms in locating excellent business sites. The IDA owns and operates buildings at the Technology Development Center in Potsdam and at the Industrial Parks in Massena and Gouverneur. For additional information about any of these properties refer to 4.0 Industrial Sites and Office Parks in this section.

*Contact*

St. Lawrence County Industrial Development Agency  
80 State Highway 310, Suite 6  
Canton, New York 13617-1496  
(315) 379-9806  
[www.slcida.com](http://www.slcida.com)

### 3.3 Additional Business Assistance

#### **St. Lawrence County Revolving Loan Fund**

The SLC RLF provides low-interest rate loans to companies looking to expand or establish a facility in St. Lawrence County.

Businesses that may be eligible for these funds include manufacturing, assembly, and warehousing companies. Firms that provide products or services not available to St. Lawrence County-based businesses may also be eligible. Funding is limited to 30% of the project or \$150,000, whichever is less. The interest rate is ½ of prime plus 1% or 5%, whichever is greater. The loan rate will be fixed at closing.

*Contact*

St. Lawrence County Industrial Development Agency  
80 State Highway 310, Suite 6  
Canton, New York 13617-1496  
(315) 379-9806  
[www.slcida.com](http://www.slcida.com)

### **St. Lawrence County Micro-enterprise Revolving Loan Fund**

The Micro-enterprise Revolving Loan Fund (MRLF) provides monies to low and moderate-income persons in St. Lawrence County to start or expand micro-enterprise businesses. Low interest loans are available for machinery and equipment, property improvements, inventory, and some working capital.

The MRLF may lend from \$1,000 up to a maximum of \$20,000. The terms of each loan are determined by a financial analysis and the particular needs of the project.

#### *Contact*

St. Lawrence County Local Development Corporation  
80 State Highway 310, Suite 6  
Canton, NY 13617  
(315) 379-9806  
[www.slcida.com](http://www.slcida.com)

### **Village of Potsdam Micro-enterprise Revolving Loan Fund**

The Micro-enterprise Revolving Loan Fund (MRLF) provides monies to low and moderate-income persons in Potsdam to start or expand micro-enterprise businesses. Low interest loans of up to \$25,000 are available for machinery and equipment, property improvements, inventory, and some working capital.

#### *Contact*

Village of Potsdam  
Civic Center, Box 1568  
Potsdam, New York 13676  
(315) 265-1670

### **Community Loan Funds**

A number of the communities within St. Lawrence County provide loans to businesses for a variety of purposes. For specific information call the phone numbers listed below for each program:

Ogdensburg Growth Fund  
City of Ogdensburg  
City Hall  
Ogdensburg, NY 13669  
(315) 393-7150

Oswegatchie Revolving Loan Fund  
Town Hall, State Street  
Heuvelton, NY 13654  
(315) 393-2124

Town of Norfolk  
Community Development Office  
Main Street  
Norfolk, NY 13667  
(315) 384-3026

### **Regional Revolving Loan Trust Fund**

The Regional Revolving Loan Trust Fund established by the North Country Alliance provides loans for short- and medium-term working capital, real estate, and machinery and equipment. Businesses that may be eligible for these loan funds include a business which is located in one of the following counties: Clinton, Essex, Franklin, Lewis, Jefferson, and St. Lawrence; has 100 or fewer full-time employees and has a minimum equity interest in the business of at least 10%. Funding is limited to 50% of the total project cost or \$150,000, whichever is less. There is a \$75,000 limit on working capital. The interest rate could range from a minimum of 5% to a maximum of a floating prime rate plus 1%. Fees include a \$100 application fee and a commitment fee equal to the greater of \$250 or ½% of the loan principal.

#### *Contact*

St. Lawrence County Office of Economic Development  
80 State Highway 310, Suite 6  
Canton, New York 13617-1496  
(315) 379-9806  
[www.slcida.com](http://www.slcida.com)

### **Greater Massena Economic Development Fund**

The Greater Massena Economic Development Fund (GMEDF) provides monies in the form of loans for the purchase of fixed assets. Businesses eligible for GMEDF funds include manufacturing, assembling, and processing firms.

Participation is limited to 30% of the project cost or \$200,000, whichever is less. The loan rate is ½ of prime plus 1%, with a floor of 5% and a ceiling of 10%. The interest rate is fixed at time of closing.

#### *Contact*

St. Lawrence County Industrial Development Agency  
80 State Highway 310, Suite 6  
Canton, New York 13617-1496  
(315) 379-9806  
[www.slcida.com](http://www.slcida.com)

### **Seaway Private Equity Corporation (SPEC)**

SPEC invests its available funds through Qualified Business Development Firms that have outstanding records of attracting private equity investors and expertise in developing successful new business ventures. As partners, they can take your renewable energy, environmental or other SPEC Board-approved technology and create employment opportunities for the region.

The New York Power Authority has contracted with SPEC to disburse funds for the purpose of attracting private equity investors and making private equity investments in new business opportunities in St. Lawrence County, New York. SPEC's agreement with the New York Power Authority includes the following investment criteria and procedures: Eligible investments are limited to new technology companies that are headquartered in and principally operated in St.

Lawrence County, New York; and based on renewable energy or environmental technologies (or others as approved by a two-thirds vote of the SPEC Board); Maximum investment amount: \$1,000,000; Minimum investment amount: \$75,000; Total amount of investment capital available to SPEC: \$10,000,000; Minimum amount of matching private investment: \$2 for every \$1 of SPEC funds.

*Contact*

CITEC, Inc. / Operational Coordinator for SPEC  
65 Main Street, Suite 101  
Potsdam, New York 13676  
Phone 315.268.3778  
Email [solutions@citec.org](mailto:solutions@citec.org)

### 3.4 New York State Business Incentives

#### **Low Cost Financing Assistance**

Through the Empire State Development Corporation (ESDC), New York State provides direct loans or interest subsidy grants for the acquisition, renovation, or improvement of real estate, as well as the acquisition of machinery and equipment. Direct loans are well below market rates and interest subsidy grants reduce the cost of borrowing from a conventional state lender. In addition, projects may be partially or wholly financed with Industrial Development Agency (IDA) bonds.

#### **Training Assistance**

New York State can provide financial training assistance to partially defray the costs of upgrading skills or training new employees. Grant funds are available through ESDC's Regional Economic Development Partnership Program (REDPP) and the Department of Economic Development Skills Training Program.

#### **Manufacturing Productivity Improvement**

Two programs, the Manufacturing Extension Partnership (MEP) and the Industrial Effectiveness Program (IEP), provide assistance to small and medium-sized New York State manufacturing firms in undertaking productivity and other operational improvements needed to remain competitive and profitable. Funds are available for both preliminary and full productivity assessments.

#### **State and Local Tax Credits**

A tax credit of up to 5% of new capital invested in buildings and/or depreciable tangible personal property used primarily in production is available in New York State. An employment incentive credit of 1.5% to 2.5% for the same new capital investment is deductible by corporations that meet a minimum employment standard. In addition, local real property taxes may be reduced significantly through the assistance of the IDA.

#### **Empire Zone Benefits**

Certified businesses that plan on hiring new workers, building, or making an investment in machinery in either Potsdam or Ogdensburg may be eligible for a combination of State tax credits and benefits through the Empire Zone Program. The benefits include:

- QEZE Sales Tax Exemptions: Qualified Empire Zone Enterprises (QEZEs) are granted a 10-year exemption from State sales tax on purchases of goods and services (including utility services) used predominantly in an Empire Zone.
- QEZE Credit for Real Property Taxes: Qualified Empire Zone Enterprises are allowed a refundable credit against business or income tax equal to a percentage of real property taxes paid in the zone.
- QEZE Tax Reduction Credit: Qualified Empire Zone Enterprises are allowed a credit against business or income tax equal to a percentage of taxes attributable to the zone enterprise.
- EZ Wage Tax Credit: This credit is available for up to five consecutive years for companies hiring full-time employees in newly created jobs. For employees in special targeted groups, this credit equals \$3,000 per year, with a credit of \$1,500 per year for all other new hires.
- EZ Investment Tax and Employment Incentive Credits: Businesses that create new jobs and make new investments in production, property and equipment may qualify for tax credits of up to 19% of the company's eligible investment.
- New Business Refund: Businesses new to New York State are entitled to a 50% cash refund of unused EZ-WRC and ITC amounts. Other businesses may carry forward unused credits indefinitely.
- Utility Rate Savings: Special reduced electric and gas rates may be available through investor-owned utilities in New York State. Businesses that locate or expand their operations in an EZ may receive significantly reduced rates.
- Zone Capital Credit: A 25% tax credit against personal or corporate income taxes is available for contributing or purchasing shares in a zone capital corporation; or for a direct equity investment in a certified zone business; or for contributions to approved community development projects within an EZ.
- Sales Tax Refund or Credit: Purchases of building materials to be used for commercial or industrial real property located in an EZ are eligible for a refund or credit of NYS sales taxes. A similar refund or credit of local sales tax may also be available from the locality.
- Real Property Tax Abatement: EZs may offer tax abatements from an increased assessment, with the abatement value based on improvements to real property for up to 10 years. This holds true for up to seven years at 100%, decreasing over the last three years of the exemption.

Qualifications for some of the Empire Zone Program incentives listed above are based on business structure, job creation factors, company assets, wage compensation ratios, and corporate tax structure.

*Contact*

Empire State Development  
 North Country Regional Office  
 Dulles State Office Building  
 317 Washington Street  
 Watertown, New York 13601  
 (315) 785-7907

### 3.5 Additional New York State Programs

#### *Linked Deposit*

The linked deposit program assists eligible businesses within the state to make investments and undertake projects that will contribute to improving their performance and competitiveness. The program provides businesses with affordable capital, based on bank loans at reduced interest rates which are subsidized by "linked" State deposits.

#### *International Trade Development and Investment*

Foreign direct investment assistance helps foreign investors establish a New York operation through direct investment and joint ventures or strategic alliances.

#### *Office*

Empire State Development  
North Country Regional Office  
Dulles State Office Building  
317 Washington Street  
Watertown, New York 13601  
(315) 785-7907

<b>4.0 INDUSTRIAL SITES AND OFFICE PARKS</b>
--

#### 4.1 Gouverneur

Constructed in 1984, the 60-acre Gouverneur Industrial Park is located on the border of the village and town on Factory Street. It is just one-fourth of a mile southeast of U.S. Route 11, within 30 miles of both the Watertown and Ogdensburg International Airports, 30 miles from the Ogdensburg-Prescott International Bridge, which connects the United States and Canada, and only 10 miles from Fort Drum, a U.S. Army base where first phases of a billion-dollar expansion are already underway. Of the available 60 acres, 21 acres are fully-serviced (water, sewer, gas, and electrical).

The park's infrastructure includes 6-inch water mains and 8-inch sewer mains, both services provided by the village. The electrical power is provided by National Grid with 115,000 volt transmission line within close proximity and 13,200 volt distribution. Natural gas is available from St. Lawrence Gas Company.

The park is owned by the St. Lawrence County Industrial Development Agency, which coordinates park development activities with the Gouverneur Area Development Corporation. The park currently has one 15,000 square feet industrial building.

## 4.2 Massena

The Massena Industrial Park includes 55 fully-serviced acres, zoned for light and medium industrial use. The park is located in the Village of Massena just off South Main Street (NYS Route 420).

The Park's infrastructure includes 8- and 10-inch water mains and 8-inch sewer mains. Natural gas is available to the park from St. Lawrence Gas Company and electricity is supplied by the Massena Electric Department, a municipal power system. A Conrail line runs adjacent to the park and provides a direct link to national rail networks.

The Massena Industrial Park is owned by the Business Development Corporation for a Greater Massena. The park has nine buildings with approximately 160,000 square feet of industrial space.

### *Contact:*

Business Development Corp for a Greater Massena  
85 Robinson Road, PO Box 5217  
Massena, New York 13662  
(315) 769-8484  
[bdc@massenaworks.com](mailto:bdc@massenaworks.com)

## 4.3 Northern Advanced Technologies Corporation (NATCO) Business and Research Park

The Northern Advanced Technologies Corporation Business and Research Park opened in the fall of 1987 on 25 acres of land in the Village of Potsdam, adjacent to the campus of SUNY Potsdam.

Northern Advanced Technologies Corporation was developed and the facilities were designed to attract new businesses and branch operations of established United States and Canadian corporations to St. Lawrence County.

The park is hard-wired to the mainframe computers through the university systems. This provides access to state-of-art digital switching data network. Additional services available to park tenants include arrangements for consulting with local university faculty and access to million-volume library system, recreational facilities and other resources through the Associated Colleges of the St. Lawrence Valley.

### *Office*

St. Lawrence County Industrial Development Agency  
80 State Highway 310, Suite 6  
Canton, New York 13617-1496  
(315) 379-9806

### 4.3 Ogdensburg

Ogdensburg offers outstanding opportunities for business development with over 300 fully-serviced acres available in two industrial parks: Ogdensburg Commerce Park and Ogdensburg Heavy Industrial Park. Both of these parks are owned and operated by the Ogdensburg Bridge and Port Authority.

#### *Ogdensburg Commerce Park*

The Ogdensburg Commerce Park includes 75 fully-serviced acres located on the St. Lawrence River.

The park's special features include no property taxes for five years, no business income tax levied by the City of Ogdensburg and attractive lease and purchasing options.

An Ogdensburg location offers quick access to both United States and Canadian markets. The park is adjacent to and only five minutes from the Ogdensburg-Prescott International Bridge and Canada's highway 401.

#### *Ogdensburg Heavy Industrial Park*

The Ogdensburg Heavy Industrial Park includes 250 fully serviced acres zoned for medium and heavy industrial use.

The park's infrastructure includes 16-inch water mains, 8-inch sewer mains, and 30-inch storm mains. Natural gas is provided by St. Lawrence Gas Company that provides different rate structures depending on usage (see page 18 for information). Electricity is supplied by National Grid that has a variety of rate structures (See Section: Public and Private Services, 1.1).

The park's special features include access to a number of transportation options including seaway services, and truck, air, and rail services. The park is located within a qualified Foreign Trade Zone and a designated Economic Development Zone that can provide business financial incentives which makes Ogdensburg an attractive location.

#### *Contact*

Ogdensburg Bridge and Port Authority  
One Bridge Plaza  
Ogdensburg, New York 13699  
(315) 393-4080

## Culture and Recreation

St. Lawrence County provides residents and visitors alike with a wealth of cultural, recreational, and sporting activities. Its unique location takes advantage of both the Thousand Islands and the Adirondack regions. Both of the County's international bridges, the Massena-Cornwall International Bridge and the Ogdensburg-Prescott International Bridge, afford a spectacular view of the St. Lawrence River and provide easy passage between the United States and Canada.

Throughout the year, a wide variety of cultural events are presented by various organizations. These include both dramatic and musical theatre productions; choral, band, and ensemble concerts; and artists and speakers of national stature. In addition, more than 190 fairs, festivals, and other events are held throughout the County annually. There are also a number of museums where one can discover local history or view inspiring art.

St. Lawrence County allows for active recreation all year round. The large number of streams, rivers, and lakes in the county make it a haven for all types of fishermen in any season. During the winter months, a person can enjoy ice-skating at one of the local arenas or lakes, downhill skiing at nearby resorts, and cross-country skiing or snowmobiling on marked trails throughout the County. The summer months find people swimming, picnicking, or simply enjoying the warm summer days. Campgrounds, hiking trails, and boating facilities abound.

The sports enthusiast can enjoy a variety of activities as either spectator or participant. Popular local sports include high school, collegiate, and community hockey and basketball. The County offers residents and visitors golf courses, tennis courts, baseball fields, and memberships at the local college and university athletic facilities on a subscription basis.

Recreation in St. Lawrence County can either be quiet and relaxing or fast and exciting: whatever your choice, the opportunities are there.

### 1.0 ST. LAWRENCE COUNTY ATTRACTIONS

#### 1.1 Crane School of Music, SUNY Potsdam

The Crane School of Music was founded in 1886, and continues to be a major center of music education. The school's complex features a 1,400-seat concert hall, a 450-seat music theater, an extensive music library, 150 pianos, 6 organs, 3 harpsichords, and a unique collection of Renaissance string and wind instruments. Each season, the school's symphony orchestra, opera guild, ensembles, chamber groups, and choruses present over two hundred performances, the majority of which are free to the public.

#### 1.2 Remington Art Museum, Ogdensburg

Frederic Remington is recognized as the foremost artist on the American Old West. A native of Canton, Remington moved west at the age of 19. The museum's collection includes 14 bronze pieces, 70 oils, 140 original watercolors, and several hundred pen and ink sketches by the artist.

The museum also houses Frederic Remington's personal art collection, family memorabilia, and artifacts.

Located in the Hall Mansion in Ogdensburg, the museum also contains Belter furniture; the Sharp Collection of period glass, china, silver, and cameos; the Haskell Collection of 19th century American and European paintings; sculptures by Sally James Farnham; and works by Ogdensburg native artist Frank Rossel.

### 1.3 The Seaway Trail

The Seaway Trail is the longest recreational autoroute in the United States. It continues for 454 miles, from the Pennsylvania border at Ripley, New York, along the shorelines of Lakes Erie and Ontario, through Ogdensburg and Massena, and ending at the Seaway International Bridge in Rooseveltown, New York. In addition, the water route version of the trail may be navigated by boat.

The trail highlights some spectacular natural wonders: the Great Lakes Erie and Ontario, the St. Lawrence River, the world-renowned Niagara Falls, and the majestic Thousand Islands region.

The trail winds through farmlands, towns, and scenic landscapes. It passes 22 State parks and 10 counties. Situated along the trail are campsites, hiking trails, boating facilities, beaches, woodlands, and resorts. The Seaway Trail is an exceptional trip by either car or boat.

### 1.4 Robert Moses-Robert H. Saunders Power Dam, Massena

The Robert Moses-Robert H. Saunders Power Dam is located on Route 131 north of Massena. The New York Power Authority and the Ontario Hydro Company own the dam jointly. Visitors to the dam will discover how electric power is produced and see how 150 million gallons of water flowing through the dam every minute generate hydropower for residences in New York State and the surrounding areas. The dam generates a total of 1,600 megawatts of electric power, of which 800 is produced by the New York Power Authority.

## 2.0 CULTURAL RESOURCES

The cultural and historic environment of St. Lawrence County is surprisingly varied and rich. During the course of a single year, there are literally hundreds of programs and events presented throughout the county. The nature of these events varies from opera to summer fairs to historical recreations. Presented here are some of the more popular cultural events and attractions.

## 2.1 Theater and Cultural Attractions

Theatrical arts are alive and well in St. Lawrence County. During every season of the year, local groups are performing both old favorites and exciting new pieces. In addition to the regular performances listed here, there are offerings from university groups such as Clarkson Theater, SUNY Potsdam Drama Department, and the Crane School Opera Guild.

Ogdensburg Command Performances.....	Ogdensburg
Grasse River Players .....	Canton
Norwood Village Green .....	Norwood
Crane School of Music (Symphony, Wind Ensemble, and Chorus) .....	Potsdam
Celebrity Artist Series .....	Potsdam

## 2.2 Festivals, Fairs, and Other Events

There are a number of recreational and cultural events held each year in St. Lawrence County. In particular, many local volunteer fire departments sponsor fund raising events throughout the year, including field days and carnivals. For additional information on these events, contact the individual fire department or the St. Lawrence County Fire Coordinator at (315) 379-2240.

Contemporary Music Festival.....	Crane School of Music - Potsdam
Fiddlers Festival.....	Parishville
Spring Festival .....	Crane School of Music - Potsdam
St. Lawrence County Gas and Steam Engine Show .....	Canton
Steinman Festival of the Arts .....	St. Lawrence University - Canton
St. Lawrence River Bluegrass Festival.....	Waddington
Festival of North Country Folklife .....	Massena
Heritage Festival .....	Massena
International Seaway Festival .....	Ogdensburg
Madrid Bluegrass Festival.....	Madrid
Oktoberfest .....	Massena
Potsdam Summer Festival.....	Potsdam
Black Lake Ice Fishing Derby.....	Edwardsville
Morristown Fishing Derby .....	Morristown
Rushton Canoe Races .....	Canton

## 2.3 Museums and Art Galleries

There are 18 museums in St. Lawrence County, and more than 46 museums within a short drive. In addition, many towns throughout the county maintain their own museums. These include the towns of Brasher, Canton, Colton, Gouverneur, Massena, Norfolk, Parishville, and Potsdam. Days and hours of operation vary, so please contact the individual museums for more information.

Akwesasne Museum.....	Hogansburg
Richard F. Brush Art Gallery .....	St. Lawrence University - Canton
Roland Gibson Gallery .....	SUNY Potsdam - Potsdam
Frederic Remington Art Museum .....	Ogdensburg
Silas Wright House .....	St. Lawrence County Museum - Canton

## 2.4 Historic Sites

There are many reminders of the past in St. Lawrence County. Historically, St. Lawrence County has been important to the growth and trade expansion of both the United States and Canada. More information on the history of the area may be obtained through the St. Lawrence County Historical Association at (315) 386-8133.

Robinson Bay Archeological District	Prehistoric	Massena
Fort La Presentation	1749	Ogdensburg
First Power Dam and First American Locks	1808	Waddington
Old Customs House	1809	Ogdensburg
French Family Farm	1815	Potsdam
Land Office (now Village Library)	1821	Morristown
Samuel Stocking House	1821	Morristown
Morristown Schoolhouse	1824	Morristown
Stone Windmill	1825	Morristown
Governor Silas Wright House	1824	Canton
Gardner Cox House	1838	Hannawa Falls
United Methodist Church	1838	Morristown
Harristown Gristmill	1849	Morley
Judge John Fine House	1849	Ogdensburg
Dr. Buck-Stevens Octagon House	1855	Brasher Falls
Richardson Hall	1855	Canton
New York State Armory	1858	Ogdensburg
Chase Mills Inn	1865	Chase Mills
Oswegatchie Pumping Station	1868	Ogdensburg
Herring-Cole Hall	1869	Canton
Trinity Episcopal Church	1870	Morley
First U.S. Talc Mill	1876	Fowler
Raymondville Parabolic Bridge	1886	Norfolk
Lisbon Town Hall	1889	Lisbon
Dark Island Castle	1905	Hammond
United States Post Office	1915	Gouverneur
United States Post Office	1932	Potsdam
United States Post Office	1936	Canton
Oldest All-Aluminum Railway Span in the World	1946	Massena

## 2.5 Libraries

Many of the communities in St. Lawrence County support libraries that are free to the public. The added presence of the colleges and universities allows access to highly specialized materials in the arts, technology, business, and environmental conservation.

### Local and Community Libraries

Canton Free Library	Canton
Clifton Community Library	Cranberry Lake
Colton-Hepburn Library	Colton
Gouverneur Library	Gouverneur
Hermon-Hepburn Library	Hermon
Lisbon-Hepburn Library	Lisbon
Madrid-Hepburn Library	Madrid
Massena Public Library	Massena
Norfolk-Hepburn	Norfolk
Norwood Library	Norwood
Ogdensburg Public Library	Ogdensburg
Potsdam Public Library	Potsdam
Rensselaer Falls Library	Rensselaer Falls
Richville Free Library	Richville
Russell Public Library	Russell
Waddington-Hepburn Library	Waddington

### College and University Libraries

F.W. Crumb Memorial Library	SUNY Potsdam - Potsdam
Crane Music Library	SUNY Potsdam - Potsdam
Andrew Schuler Educational Resources Center	Clarkson University - Potsdam
O.D. Young Library	St. Lawrence University - Canton
Southworth Library	Canton College of Technology - Canton
Ranger School Library	State Ranger School -Wanakena
Wadhams Hall Library	Wadhams Hall - Ogdensburg

## 2.6 Churches

St. Lawrence County has a rich religious history. Its founders were influenced by both Catholic French Canada and Protestant New England. During the nineteenth century, as part of the "burned over district," St. Lawrence County met with fiery religious revivalism that encompassed diverse faiths. That diversity continues today, as illustrated by the 112 churches and significant Amish presence in St. Lawrence County.

### St. Lawrence County Churches

Advent Christian	1	Lutheran Church	1
Assembly of God	5	Methodist Church	3
Baptist Church	14	Mission Evangelist Church	1
Charismatic	3	Presbyterian Church	11
Christian Science	1	Roman Catholic Church	19
Church of Christ	1	Nazarene Church	1
Community Churches	3	Pilgrim Holiness	3
Congregational Church	1	Seventh Day Adventist	1
Episcopal Church	7	Society of Friends	1
Free Methodist Church	1	Unitarian Universalist	1
Full Gospel Church	4	United Church of Christ	5
Jehovah's Witnesses	2	United Methodist Church	12
Jewish Synagogues	2	Wesleyan Church	6
Latter Day Saints	2		

## 2.7 Service Organizations and Clubs

The people of St. Lawrence County have the opportunity to join a wide variety of organizations, including fraternal orders, service organizations, youth groups, and professional societies. St. Lawrence County has active chapters of the American Legion, the B.P.O. Elks, the Moose Lodge, the Kiwanis Club, the Knights of Columbus, the Lion's Club, the Masonic Temple, Rotary International, and the Veterans of Foreign Wars. Many towns also have active youth groups, such as the Girl Scouts-USA, the Seaway Valley Council of the Boy Scouts of America, 4-H Cooperative Extension, and Boys' and Girls' Clubs. A number of professional societies, including the American Product and Industrial Control Society, the American Society of Civil Engineers, and the Society of Women Managers, may be reached through their college and university chapters.

<b>3.0 RECREATIONAL FACILITIES</b>
------------------------------------

**3.1 Community and Civic Centers**

Most of the communities in St. Lawrence County schedule a variety of recreational activities for their residents. The following is a list of community-managed centers that have their own programs and are also available for community organizations. Each may be contacted directly regarding upcoming events.

Canton Community Center.....	Canton
Clifton-Fine Community Center .....	Star Lake
Massena Arena .....	Massena
Norwood Community Center .....	Norwood
Potsdam Community Center/Pine Street Arena .....	Potsdam
Tri-Town Community Center .....	Brasher
Waddington Community Center .....	Waddington

**3.2 College and University Recreational Facilities**

Most of the colleges and universities in the county open their athletic and recreational facilities to the public on a subscription basis. The following is a brief description of these facilities. Please contact the school's athletic facilities for detailed information.

Institution	Facilities	Activities
SUNY Canton	Alumni Gymnasium	Tennis, weight room, intramural sports, swimming
St Lawrence University, Canton	Appleton Arena	Ice hockey, recreational skating
	Augsbury Physical Education Center	Dance studio, gymnasium, swimming, exercise rooms, squash courts, wrestling
	Leithead Field House	0.1 mi track, tennis courts, all-purpose area
Clarkson University, Potsdam	Cheel Arena	Ice hockey, weight room, recreational skating
	Schuler Indoor Center	Exercise rooms, racquetball courts, sauna/whirlpool, gymnasium, swimming, track
	Outdoor Facilities	Baseball & soccer fields, tennis courts
SUNY Potsdam	Maxcy Hall	Ice hockey, recreational skating, field house, racquetball courts, gymnasias, swimming
	Outdoor facilities	1/4 mi. track, tennis courts
	Athletic fields	

### 3.3 Golf Courses

As soon as the spring weather arrives, many of the golfers in St. Lawrence County can be seen on one of a dozen courses enjoying the warm sun and pleasant scenery. They can choose from among four 18-hole and ten 9-hole courses. The individual clubs should be contacted regarding their specifics of operation.

Courses with 18 Holes	Location	Yards
Massena Country Club	Massena	6,364
St. Lawrence Golf & Country Club	Canton	6,780
Twin Brooks Golf Course	Waddington	6,600
Partridge Run Golf Course	Canton	

Courses with 9 Holes	Location	Yards
Fox Hill Golf & Country Club	Massena	
Clifton-Fine Memorial Golf Course	Star Lake	2,766
Fore By Fore	Gouverneur	2,965
Gouverneur Country Club	Gouverneur	3,068
Madrid Golf Course	Madrid	2,100
Meadowbrook Golf Course	Winthrop	3,050
Potsdam Town & Country Club	Potsdam	3,100
Raymondville Golf Course	Raymondville	3,070
St. Lawrence State Park	Ogdensburg	2,914
Cedar View	Rooseveltton	3,276
Deerfield Country Club	Heuvelton	

## 4.0 OUTDOOR RECREATION

### 4.1 Downhill Skiing

One of the most popular winter sports with St. Lawrence County residents is downhill skiing. There are three downhill skiing centers close by in the region, for a total of 75 trails. A bit farther away but still accessible are the skiing centers of New Hampshire, Vermont, and Massachusetts, which make excellent weekend excursions. Please contact the individual centers for additional information.

Skiing Centers	Number of Trails	Vertical Drop (ft.)
Gore Mountain, North River, NY	41	2,100
Titus Mountain, Malone, NY	15	600

### 4.2 Cross-Country Skiing and Snowmobiling

The terrain of St. Lawrence County is excellently suited to cross-country skiing and snowmobiling. There are more than 200 km of cross-country trails spread over 13 ski areas

within the county. The mean annual snowfall for the county is 66 inches, providing both the occasional skier and the serious athlete with a generous amount of quality ski-time. In addition, there are approximately 46 cross-country ski areas in the region and numerous snowmobiling trails. For more information, contact the individual agencies responsible for the area. (State Parks are also listed in 4.4)

Cross Country Ski Areas	Location	Kms of Trails
Canton High School	Canton	5
Clarkson Upper Campus Trail	Potsdam	2
Cranberry Lake Section Forest Preserve	Cranberry Lake	60
Dillabough State Forest	Pierrepont	7
Higley Flow State Park	Colton	8
Jacques Cartier State Park	Morristown	10
Little River, St. Lawrence Golf Course Trail	Canton	10
Postwood Park and County Forest	Hannawa Falls	13
Robert Moses State Park	Massena	25
St. Lawrence State Park	Ogdensburg	8
Star Lake, Streeter Lake Section	Star Lake	40
SUNY Canton College of Technology	Canton	8
Upper/Lower Lakes Wildlife Management Area	Canton	8

#### 4.3 Hiking and Climbing

The County forests and other areas have numerous well-kept trails, both inside and outside the Adirondack Park. Many St. Lawrence County residents have climbed all of the 46 Adirondack high peaks, joining a growing number of Adirondack 46ers.

#### 4.4 State Parks

In addition to the 11 State Parks listed here, there are 38 State Parks nearby in the region. Contact the State Department of Parks and Recreation at (518) 474-0456 or 1-800-456-CAMP for more information.

NAME/ LOCATION	BOATING	CAMPING	XC SKIING	FISHING	HIKING	SWIMMING
Cedar Island State Park Hammond NY	X	X			X	
Cedar Point State Park Clayton NY	X	X		X		X
Coles Creek State Park Waddington NY	X	X		X		X
Cranberry Lake State Park Clifton NY	X	X		X	X	X
Croil Island State Park* Louisville NY						

Eel Weir State Park Oswegatchie NY	X	X		X		
Galop Island State Park* Lisbon NY						
Higley Flow State Park South Colton NY	X	X	X	X	X	X
Jacques Cartier State Park Morristown NY	X	X	X	X	X	X
Robert Moses State Park Massena NY	X	X	X	X	X	X
St. Lawrence State Park Oswegatchie NY	X		X			

\* Croil Island and Galop Island are underdeveloped State Parks.

#### 4.5 Niagara Mohawk Camp and Picnic Facilities

National Grid maintains camping and picnic facilities along St. Lawrence County rivers where it has hydroelectric stations. All of these facilities are open to the public. In addition to the 11 sites listed here, there are 23 facilities in the nearby region.

Site	Location	River
Higley Pond	Colton	Raquette
Five Falls Pond	Colton	Raquette
Rainbow Falls Pond	Colton	Raquette
McNeil Campsite	Colton	Raquette
Stark Falls Pond	South Colton	Raquette
Carry Falls Dam	South Colton	Raquette
Parmeter Campsite	South Colton	Raquette
Piercefield Flow	Piercefield	Raquette
Grasse	Madrid	Grasse
Flat Rock Hydro	Fine	Oswegatchie
Heuvelton Hydro	Heuvelton	Oswegatchie

#### 4.5 Boating

St. Lawrence County has a large amount of water area, including some sizeable lakes and rivers. Not surprisingly, many residents own their own boats. In total, there are 48 boat launches and marinas in the county, of which 28 are public, that provide access to seven major bodies of water for sailing, relaxing, or fishing.

Lakes	Launches/Marinas	Rivers	Launches/Marinas
Black Lake	1	Grasse River	2
Cranberry Lake	4	Oswegatchie River	2
Trout Lake	1	Racquette River	5
		St. Lawrence River	33

#### 4.6 Fishing and Hunting

Sportsmen have always been attracted to the clear waters and beautiful woodlands of St. Lawrence County. Fishing and hunting are major pastimes in the county, and thousands of visitors rediscover them every year.

The area supports both boat fishing on lakes and ponds and fly fishing in the county's fast-moving streams and rivers. During the winter months, ice fishing is also popular. Annual contests such as the Morristown Fishing Derby and the Black Lake Ice Fishing Derby are always well attended. The County Chamber of Commerce maintains a Fishing Hotline at (315) 386-1133 throughout the year to provide up-to-date information for sportsmen.

Hunters can go after both small game, such as rabbit, and larger animals, including deer. Bow hunting is permitted by special license. Popular hunting areas include Lake View, Wilson Hill, and the Upper and Lower Lakes Wildlife Management Area.

Temporary and seasonal fishing and hunting licenses are available through most Town Clerk offices, Department of Environmental Conservation offices, and many sporting goods stores. New York State also issues Lifetime Fishing Licenses and Lifetime Hunting Licenses to qualified residents.

New rates effective 10/01/09

TYPE OF LICENSE	FEE
Fishing	Resident.....\$29.00
	7-Day .....15.00
	Non-Resident.....70.00
	Non-Resident (7-day).....35.00
	Junior (1 day).....15.00
Small & Big Game	Resident.....29.00
	Non-Resident (Big Game, Bow Hunting, Muzzle-Loading)..... 140.00
Muzzle-Loading	Resident.....21.00
	Non-Resident.....140.00
Trapping	Resident.....21.00
	Non-Resident.....310.00
	Junior Trapping (Under 16 Years) .....6.00
Turkey Permit	Resident (Hunting, Sportsman, or Junior Hunting Required) .....10.00
	Non-Resident.....50.00

Bow Hunting	Resident.....	21.00
	Junior (Ages 14 – 15).....	9.00
	Non-Resident.....	140.00
Hunting – Small Game	Resident.....	26.00
	Junior.....	5.00
	Non-Resident.....	85.00
Sportsman	Includes Big Game, Small Game, Fishing .....	37.00
Super Sportsman	Includes Big Game, Small Game, Bow Hunting, Muzzle- Loading, Turkeys and Fishing.....	88.00
	Non-Resident.....	280.00
Senior Sportsman	Ages 70 and Over.....	10.00
Conservation Legacy	Includes Super Sportsman License, Habitat and Access Stamp, and Subscription to “The Conservationalist” .....	96.00

*For more information contact:*  
NYSDEC  
Fish, Wildlife & Marine Resources  
625 Broadway  
Albany, NY 12233-4750  
518-402-8845